

ULTIMEA

Solo B30

# *User Manual*



Model No.: U2200



support@ultimea.com  
support.ultimea.com

**WE ARE  
READY  
TO HELP**

**Scan code to  
download app**

You can also search for "ULTIMEA"  
on Google Play or Apple Store  
to download the app.



@ultimea\_official



+1 888-598-8875 (US) Mon-Fri 9am-5pm (PST)  
+49 89-628-25828 (EU) Mon-Fri 9am-5pm (CET)

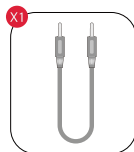
## 1 ACCESSORIES LIST



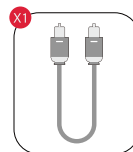
Soundbar



Power Adaptor



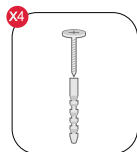
Stereo 3.5mm to 3.5mm  
Audio Cable(AUX Cable)



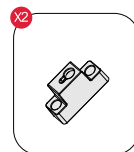
Digital Optical  
Cable



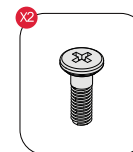
Remote Control



Wall Mounted Kit



Wall Bracket



Mounting Screw  
on Speakers

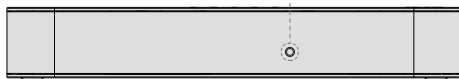


User Manual

## 2 INDICATOR LIGHT DESCRIPTION



Indicator light



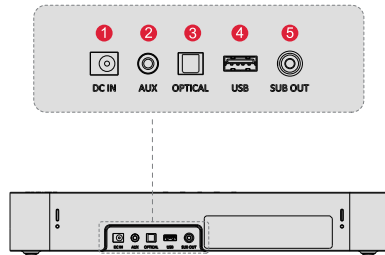
### Channel Color:

Purple: OPTICAL  
Blue: Bluetooth  
Green: AUX  
Orange: USB

### Other Status:

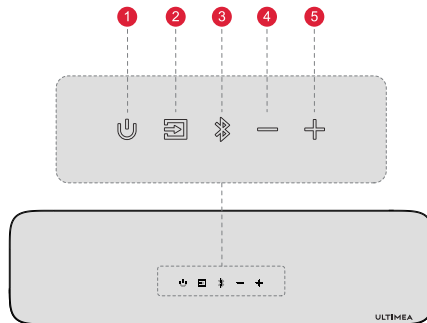
Green Flashing for 3 times: Power On  
Red Flashing for 3 times: Power Off  
Purple Flashing: OTA Upgrading  
Orange Flashing: No USB

## 3 INTERFACE INTRODUCTION





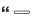


- 1 **DC IN** : Used for power input.
- 2 **AUX** : Used for receiving AUX signal input.
- 3 **OPTICAL** : Used for receiving OPTICAL signal input.
- 4 **USB** : Used for inserting USB to input signal.
- 5 **SUB OUT** : Used for connecting to a powered subwoofer.  
(Reserved interface; this product does not include a separate subwoofer)

## 4 SOUNDBAR CONTROLS

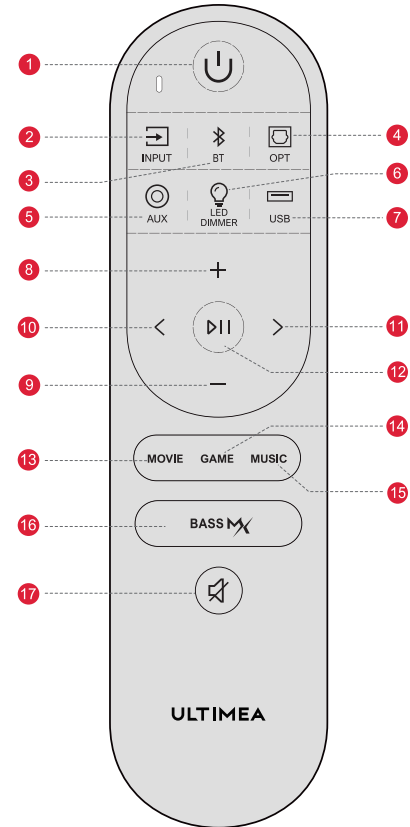


### Control Panel

- 1 “”: **Power Button**  
Press to power on / off.
- 2 “”: **Source**  
Press to switch channels: OPT(OPTICAL)-BT-AUX-USB.
- 3 “”: **Bluetooth**  
Press to switch to BT channel and enter pairing mode. Hold for 3 seconds to disconnect current device and choose to connect to a new device manually on your mobile phone / PC / TV (BT ID: Solo B30).
- 4 “”: **Volume Down**
- 5 “”: **Volume Up**

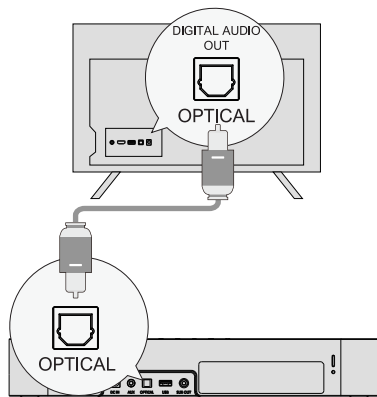
## Remote Control

- 1 “⏻”: **Power Button**  
Press to power on / off.
- 2 “⇨”: **INPUT**  
Press to switch channels: OPT(OPTICAL)-BT-AUX-USB.
- 3 “📶”: **BT**  
Press to switch to BT channel and enter pairing mode. Hold for 3 seconds to disconnect current device and choose to connect to a new device manually on your mobile phone / PC / TV (BT ID: Solo B30).
- 4 “📺”: **OPT**  
Press to switch to OPTICAL channel.
- 5 “🎧”: **AUX**  
Press to switch to AUX channel.
- 6 “💡”: **LED DIMMER**  
Press to adjust display brightness in 5 levels. Press and hold for 3s to turn off the display.
- 7 “🔌”: **USB**  
Press to switch to USB channel.
- 8 “+”: **Volume Up**
- 9 “-”: **Volume Down**
- 10 “<”: **Previous**  
For BT and USB mode only: Skip to previous track.
- 11 “>”: **Next**  
For BT and USB mode only: Skip to next track.
- 12 “▶||”: **Play / Pause**  
For BT and USB mode only.
- 13 “MOVIE ”: **MOVIE**  
Press to switch to MOVIE mode.
- 14 “GAME ”: **GAME**  
Press to switch to GAME mode.
- 15 “MUSIC ”: **MUSIC**  
Press to switch to MUSIC mode.
- 16 “BASS Mx ”: **BASSMX**  
Press to adjust bass level.
- 17 “🔇”: **Mute/Recover the volume.**



## 5 CONNECT TO TV VIA OPTICAL / AUX

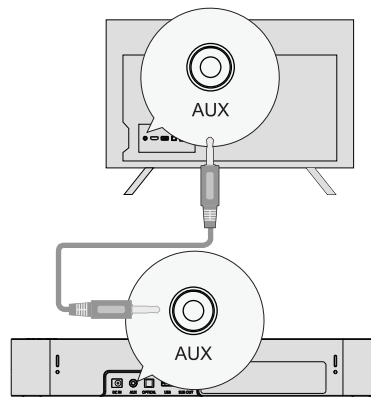
### OPTICAL



#### OPTION 1: OPTICAL

- 1 Make sure the TV's port is OPTICAL OUT, connect both sides of the cable to OPTICAL, for both the TV and the soundbar.
- 2 Make sure the optical plug is inserted correctly as it shows in the picture. Do not insert the plug upside down and break the optical.  
**Note:** If audio is playing from the internal TV speakers, mute or minimize the TV volume.

### AUX





#### OPTION 2: AUX

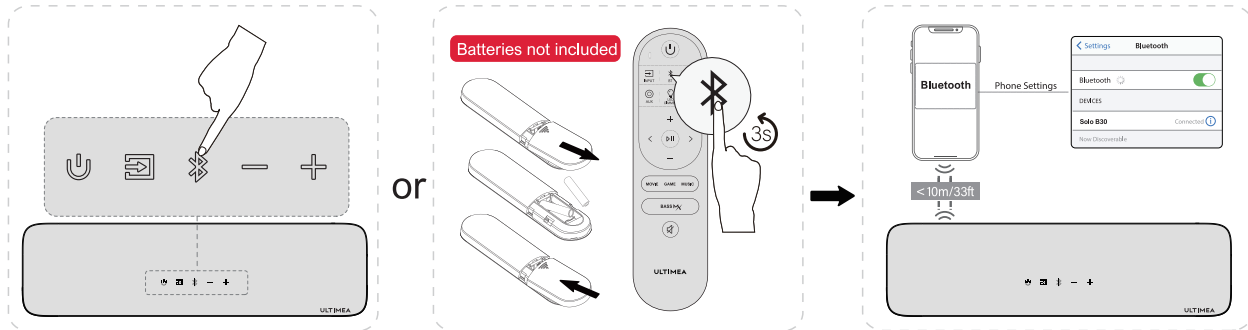
- 1 Connect the 3.5mm to 3.5mm audio cable to connect to your TV's AUX port.
- 2 Make sure the color of the cables ends matches the color of the TV ports.  
**Note:** Please remember to unplug the AUX cable from TV and Soundbar when you want to switch other mode.

**In Optical Mode:** If there is no sound, try setting the TV audio output to PCM: TV Settings > Home > Settings > Sound > Digital Audio Output > PCM

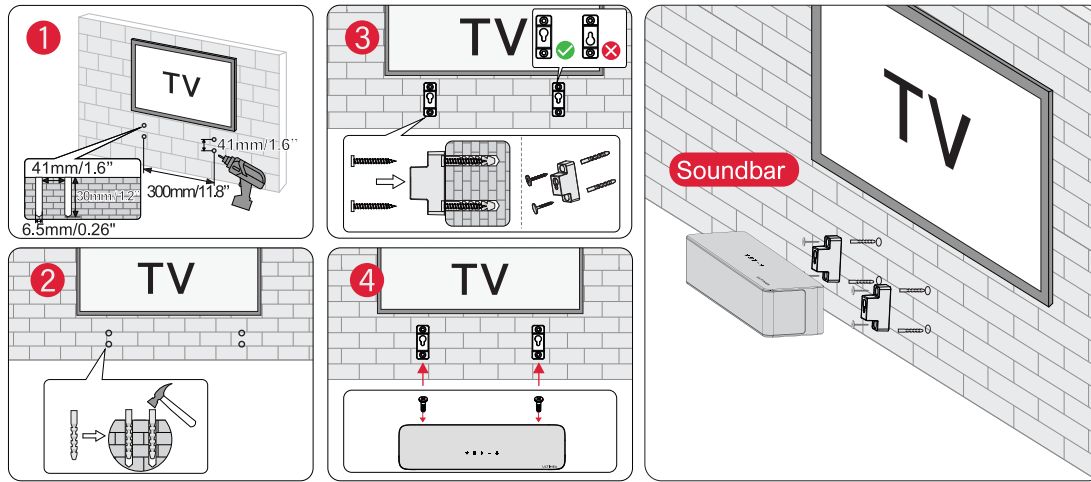
## 6 CONNECT TO BLUETOOTH®

- 1 Press the “” button on the soundbar or remote control to enter Bluetooth pairing mode.
- 2 Open your phone's Bluetooth settings, find and select “**Solo B30**” to connect the soundbar.

**Note:** If it's already in the Bluetooth mode and connected, press and hold “” button for 3 seconds to disconnect the current device and connect to new device manually on your mobile phone / PC / TV.



## 7 WALL MOUNT INSTALLATION



**Note:** The wall mount bracket used for the surround speakers is identical to that of the sound speaker, so the vertical hole spacing is the same as that of the soundbar, and the installation method is also the same.

## 8 SPECIFICATIONS

<b>Model Number</b>	U2200
<b>Power Supply</b>	AC 100-240V, ~50/60Hz
<b>Soundbar Drivers</b>	2"x2+3"x1
<b>Frequency Response</b>	70Hz - 18kHz
<b>Standby Power</b>	<0.5W
<b>Operating Temperature</b>	-10°C - 45°C/14°F - 113°F

<b>Dimensions and Weight</b>	
<b>Soundbar</b>	400 (W) × 66 (H) × 108 (D)mm 15.7" × 2.6" × 3.5"
<b>Packaging</b>	440 (W) × 140 (H) × 164 (D)mm 17.3" × 5.5" × 6.5"
<b>Net Weight</b>	1.85kg / 4.10lb
<b>Gross Weight</b>	2.20kg / 4.85lb



## SAFETY INSTRUCTIONS

### **Please read this user manual carefully and save it for future reference.**

Do not make unauthorized alterations to the product, doing so may compromise safety, regulatory compliance, system performance, and may void the warranty.

- Avoid dropping.
- Do not disassemble.
- Do not submerge in water
- Avoid extreme temperatures.
- Do not use the device outdoors during thunderstorms.
- Use original or certified cables.
- Do not place dangerous items on top of this device (e.g. liquid filled objects, lit candles).
- Clean with a dry, soft lint-free cloth. Do not use any corrosive cleaner or oil.
- To avoid hearing damage, do not listen for extended periods at high volume.
- Do not expose the batteries to extreme heat sources such as direct sunlight or open flames.
- The ideal operating temperature for this product and its accessories is between 41°F/5°C and 95°F/35°C.
- The adapter should be installed near the device and should be easily accessible.
- Do not use this product in environments of extreme heat or cold. Never expose this device to strong sunshine or wet environments.

## PROPER DISPOSAL INSTRUCTIONS



This mark shown on the product or its packaging, indicates that this product should not be disposed of with other household waste at the end of its working life.

To prevent possible harm to the environment or human health from uncontrolled waste disposal, please separate this from other types of wastes and recycle it responsibly to promote the sustainable reuse of material resources.

### **Waste Electrical & Electronic Equipment**

Household user should contact either the retailer where they purchased this product, or their local government office, for details of where and how they can take this item for environmentally safe recycling.

Business users should contact their suppliers and check the terms and conditions of the purchase contract. This product should not be mixed with other commercial wastes for disposal.

## FCC REGULATORY COMPLIANCE

Any changes or modifications not expressly approved by the party responsible for compliance could void the user's authority to operate the equipment.

This device complies with Part 15 of the FCC Rules.

Operation is subject to the following two conditions:

- (1) This device may not cause harmful interference.

(2) This device must accept any interference received, including interference that may cause undesired operation.

NOTE: This equipment has been tested and found to comply with the limits for a Class B digital device, pursuant to part 15 of the FCC Rules. These limits are designed to provide reasonable protection against harmful interference in a residential installation. This equipment generates, uses, and can radiate radio frequency energy, and if not installed and used in accordance with the instructions, may cause harmful interference to radio communications.

However, there is no guarantee that interference will not occur in a particular installation. If this equipment does cause harmful interference to radio or television reception, which can be determined by turning the equipment off and on, the user is encouraged to try to correct the interference by one or more of the following measures:

- Reorient or relocate the receiving antenna.
- Increase the separation between the equipment and the receiver.
- Connect the equipment to an outlet on a circuit different from that to which the receiver is connected.
- Consult the dealer or an experienced radio / TV technician for help.

This equipment complies with FCC radiation exposure limits set forth for an uncontrolled environment. This equipment should be installed and operated with a minimum distance of 20cm between the radiator & your body. This transmitter must not be co-located or operating in conjunction with any other antenna or transmitter.

## Declaration of Conformity

We (Manufacturer is responsible for this declaration)  
Ultimea Technology (Shenzhen) Limited  
(Company name)

20th Floor, Building 4, Tianan Cloud Park, Bantian St.,  
Longgang District Shenzhen, China 518000  
(Company address)

Declare under our sole responsibility that the product  
Trade Mark: ULTIMEA  
Product Name: Solo B30 2.1 Channel Soundbar with Bulid-in Subwoofer  
Model No.: U2200

To which this declaration relates is in conformity with  
the essential requirement set out in the Council Directive  
on the Approximation of the laws of the Member States  
relating to RED Directive (2014/53/EU) & RoHS (2011/  
65/EU) product is responsible to affix CE marking, the  
following standards were applied:

EN 55032:2015/A1:2020  
EN 55035:2017/A11:2020  
EN IEC 61000-3-2:2019/A1:2021  
EN 61000-3-3:2013/A2:2021  
ETSI EN 301 489-1 V2.2.3 (2019-11)  
ETSI EN 301 489-17 V3.2.4 (2020-09)  
ETSI EN 300 328 V2.2.2 (2019-07)  
EN 50663: 2017  
EN IEC 62368-1:2020+A11:2020  
IEC 62321-3-1:2013  
IEC 62321-4:2013+A1:2017  
IEC 62321-5:2013  
IEC 62321-6:2015  
IEC 62321-7-1:2015  
IEC 62321-7-2:2017  
IEC 62321-8:2017

Full Name: Yoyo.Yu

Position: Approbation Manager

Signature: 

Place/Date: Shenzhen, China / June.24-2024

Trade Marks :



The Bluetooth® word mark and logos are registered trademarks owned by Bluetooth SIG, Inc. and any use of such marks by Ultimea Technology (Shenzhen) Limited is under license. Other trademarks and trade names are those of their respective owners.

# ULTIMEA

Solo B30 2.1 Channel Soundbar with Bulid-in Subwoofer  
Model No.: U2200

@Dyanic Inc. All rights reserved, registered in the United States and other countries.  
9804 Crescent Center Drive, Suite 604, Rancho Cucamonga, CA 91730  
Made in China

Manufacturer: Utimea Technology (Shenzhen) Limited  
Address: 20th Floor, Building 4, Tianan Cloud Park,  
Bantian St., Longgang District, Shenzhen, China 518000



**RoHS**

If you need our support, kindly reach out to our service team. We are always glad to help.

+1 888-598-8875 (US)  
Mon-Fri 9am-5pm (PST)  
+49 89-628-25828 (EU)  
Mon-Fri 9am-5pm (CET)  
✉ support@ultimea.com  
🌐 support.ultimea.com



@ultimea\_official