

ULTIMEA

Dolby Atmos

HDMI™

Bluetooth®



User Manual

Nova S90

EN: User Manual

FR: Manuel de l'Utilisateur

DE: Benutzerhandbuch

IT: Manuale d'uso

JP: ユーザーマニュアル

ES: Manual del usuario

Model No.: U4420

Nova S90 7.1.4 Channel Dolby Atmos Soundbar

Contents

01	User Manual	English
	Connection and Installation	02
07	Benutzerhandbuch	Deutsch
	Anschluss und Installation	08
13	ユーザーマニュアル	日本語
	接続と設置	14
19	Mode d'Emploi	Français
	Raccordement et installation	20
25	Manuale d'uso	Italiano
	Connessione e installazione	26
31	Manual del usuario	Español
	Conexión e instalación	32

User Manual

WE ARE
READY
TO HELP



support@ultimea.com



Model No.: U4420

Prefer video tutorial?

Setup guidance video, USER MANUAL or Trouble Shooting on ULTIMEA website.

@ultimea_official



support.ultimea.com

+1 888-598-8875 (US) Mon-Fri 9am-5pm (PST)
 +49 89-628-25828 (EU) Mon-Fri 9am-5pm (CET)

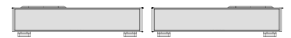
1 ACCESSORIES LIST



Subwoofer



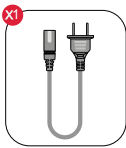
Soundbar



Surround Speaker x 2



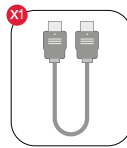
Soundbar Power Adaptor



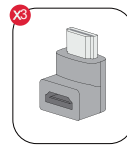
Subwoofer Power Cable



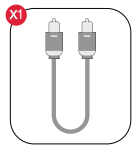
Surround Speaker Power Adaptor



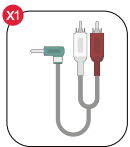
HDMI Cable



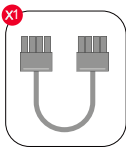
HDMI Adaptor



Digital Optical Cable



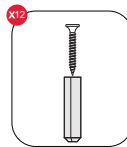
Stereo 3.5mm to RCA Audio Cable



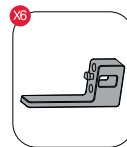
8-pin Cable for Soundbar Connection (140mm)



Remote Control



Wall Mounted Kit

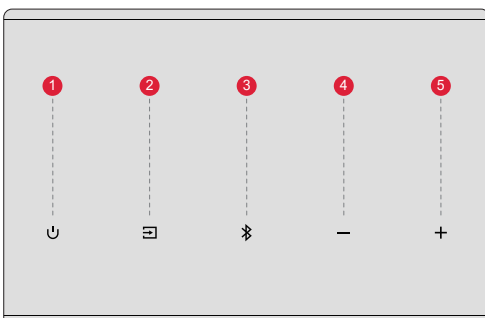


Wall Bracket



User Manual

2 SOUNDBAR CONTROLS

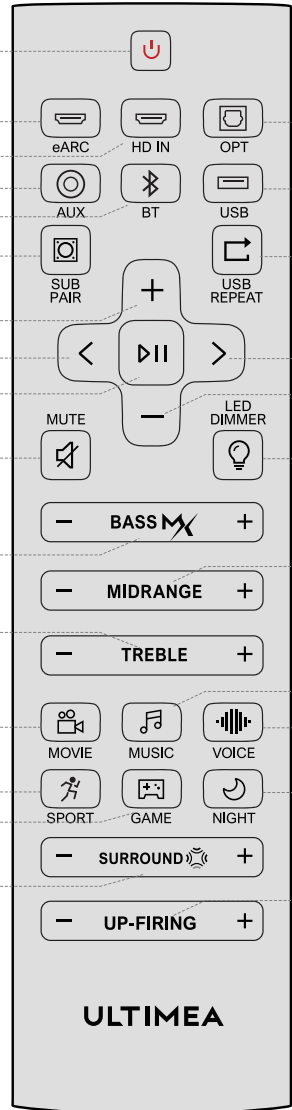


Control Panel

- 1 : **Power Button**
Press power button to power on / off.
- 2 : **Input Mode**
Press to switch channels: eARC-HD 1(HDMI IN1)-HD 2(HDMI IN2)-OPT(OPTICAL)-BT-AUX-USB.
- 3 : **BT**
Press to switch to Bluetooth channel and enter pairing mode.
Hold for 3 seconds to disconnect the current device and connect to a new device manually on your mobile phone / PC / TV (BT ID: Nova S90)
- 4 : **Volume Down**
- 5 : **Volume Up**

Remote Control

- 1 "⏻": **Power Button** Press to power on / off.
- 2 "eARC": **eARC** Press to switch to HDMI eARC channel.
- 3 "HD IN": **HD IN** Press to switch to HDMI IN channel.
- 4 "OPT": **OPT** Press to switch to OPTICAL channel.
- 5 "AUX": **AUX** Press to switch to AUX channel.
- 6 "BT": **BT** Press to switch to BLUETOOTH channel.
- 7 "USB": **USB** Press to switch to USB channel.
- 8 "SUB PAIR": **SUB PAIR**
Press and hold the button for 3 seconds to put the Soundbar in a state ready to pair with the subwoofer.
- 9 "USB REPEAT": **USB REPEAT**
Press to switch between single loop playback and list loop playback.
- 10 "+": **Volume Up**
- 11 "-": **Volume Down**
- 12 "<": **Previous** For BT and USB mode only: Skip to previous track.
- 13 ">": **Next** For BT and USB mode only: Skip to next track.
- 14 "⏸": **Play / Pause** For BT and USB mode only.
- 15 "🔇": **MUTE**
- 16 "💡": **LED DIMMER**
Press to adjust display brightness in 5 levels. Press and hold for 3s to turn off the LED display.
- 17 "BASS MAX": **BASSMAX**
Press to adjust bass level, the display will show: "B5-6", "B5-5", "B5-4", "B5-3", "B5-2", "B5-1", "B5 0", "B5 1", "B5 2", "B5 3", "B5 4", "B5 5", "B5 6".
- 18 "MIDRANGE": **MIDRANGE**
Press to adjust alto level, the display will show: "MR-6", "MR-5", "MR-4", "MR-3", "MR-2", "MR-1", "MR 0", "MR 1", "MR 2", "MR 3", "MR 4", "MR 5", "MR 6".
- 19 "TREBLE": **TREBLE**
Press to adjust treble level, the display will show: "TB-6", "TB-5", "TB-4", "TB-3", "TB-2", "TB-1", "TB 0", "TB 1", "TB 2", "TB 3", "TB 4", "TB 5", "TB 6".
- 20 "MOVIE": **MOVIE**
Press to switch to MOVIE mode, the display will show: "MOVI".
- 21 "MUSIC": **MUSIC**
Press to switch to MUSIC mode, the display will show: "MUSC".
- 22 "VOICE": **VOICE**
Press to switch to VOICE mode, the display will show: "VOIC".
- 23 "SPORT": **SPORT**
Press to switch to SPORT mode, the display will show: "SPRT".
- 24 "GAME": **GAME**
Press to switch to GAME mode, the display will show: "GAME".
- 25 "NIGHT": **NIGHT**
Press to switch to NIGHT mode, the display will show: "NIGT".
- 26 "SURROUND": **SURROUND**
Press to adjust surround sound level, the display will show: "SR-6", "SR-5", "SR-4", "SR-3", "SR-2", "SR-1", "SR 0", "SR 1", "SR 2", "SR 3", "SR 4", "SR 5", "SR 6".
- 27 "UP-FIRING": **UP-FIRING**
Press to adjust up-firing volume level, the display will show: "UP-3", "UP-2", "UP-1", "UP 0", "UP 1", "UP 2", "UP 3".

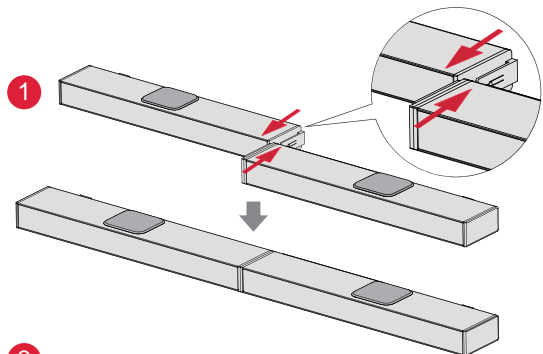


3 SOUNDBAR INSTALLATION

Assembly Steps

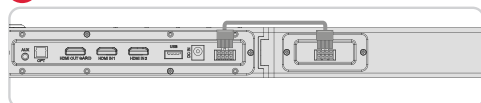
Step 1

Set the two parts of the Soundbar on the same level and align the connection joints. Connect the two parts by pushing parallelly to combine as one piece.



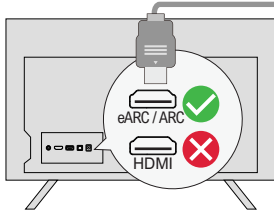
Step 2

Plug in 8-pin Cable.



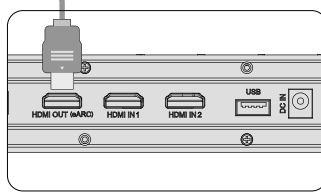
4 CONNECT TO TV VIA HDMI OUT eARC / ARC

EN



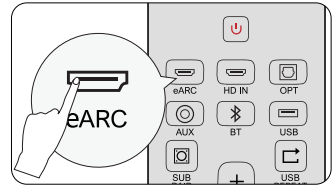
Step 1:

Connect one end of the HDMI cable to the eARC / ARC port on the back of your TV.



Step 2:

Then connect the other end into the HDMI OUT (eARC) port of the soundbar.



Step 3:

Press "eARC" button on the remote control to select "eARC" input.

Note:

Make sure your TV HDMI supports eARC, otherwise the Dolby Atmos audio signal cannot be transmitted.

Atmos: If you are watching movie in the Dolby Atmos format, please set the audio output on your TV to Pass Through: TV Settings > Home > Settings > Sound > Digital Audio Output > Pass Through

DTS: If you are watching a movie in the DTS format, please set the audio output on your TV to PCM: TV Settings > Home > Settings > Sound > Digital Audio Output > PCM

What's the difference between: HDMI IN, HDMI ARC, HDMI eARC?

HDMI IN is a standard HDMI input that allows you to connect devices to your TV or audio system. It supports audio and video signals, but it does not support audio return channel (ARC) or enhanced audio return channel (eARC) functionality.

HDMI ARC is a special HDMI port that supports two-way communication between your TV and audio system. This means that audio can be sent from your TV to your audio system, and audio system can send audio back to your TV.

HDMI eARC (Enhanced Audio Return Channel) is an updated version of HDMI ARC that supports higher quality audio formats such as Dolby Atmos and DTS:X.

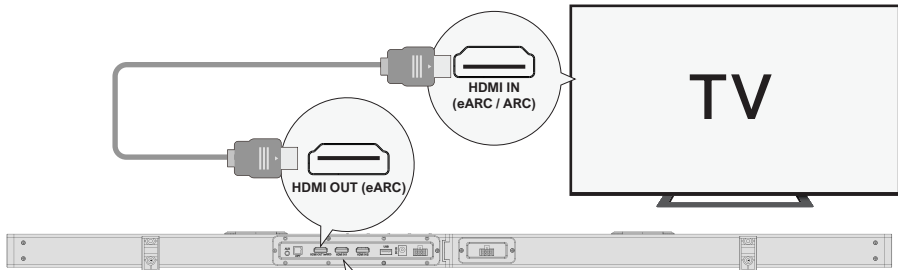
Note: Please turn on the "CEC" function on your TV.

When eARC / ARC is connected, your TV remote control can control the soundbar and TV simultaneously:

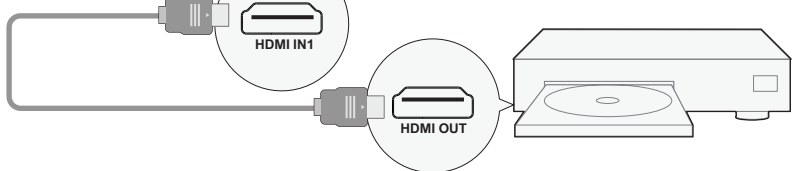
- 1 Turn on / off
- 2 Adjust the volume

5 CONNECT TO OTHER DEVICE VIA HDMI IN1 / HDMI IN2

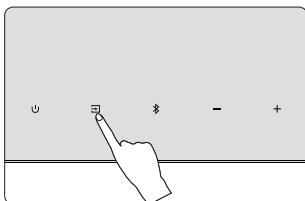
Step 1



Step 2



Step 3

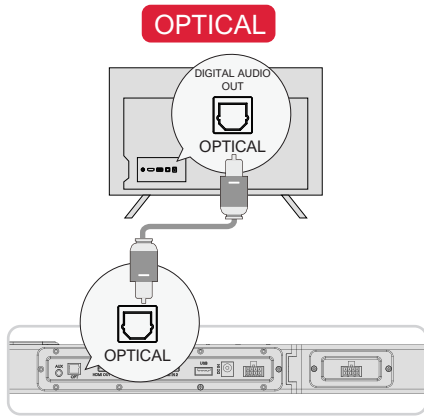


- Step 1:** Connect the HDMI Cable to the HDMI OUT (eARC) port on the Soundbar and the other end to the HDMI IN (eARC / ARC) port on the TV.
- Step 2:** Connect the HDMI cable to the HDMI OUT port on the other device (Such as DVD or game console) and the other end to HDMI IN1 / HDMI IN2 port on the Soundbar.
- Step 3:** Press " " button on Soundbar or Remote Control to switch to HDMI IN1 / HDMI IN2 channel.

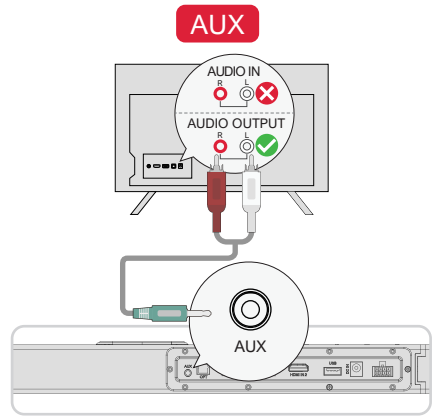
Note: Your TV HDMI needs to support eARC to transmit the Dolby Atmos audio format to your Soundbar.

6 CONNECT TO TV VIA OPTICAL / AUX

EN



OPTICAL



AUX

OPTION 1: OPTICAL

- 1 Make sure the TV's port is OPTICAL OUT, connect both sides of the cable to OPTICAL, for both the TV and the soundbar.
- 2 Make sure the optical plug is inserted correctly as it shows in the picture. Do not insert the plug upside down and break the optical.

Note: If audio is coming from the internal TV speakers, mute or minimize the TV volume.

OPTION 2: AUX

- 1 Connect the 3.5mm to RCA audio cable to connect to your TV's RCA AUDIO OUT port.
- 2 Make sure the color of the cables ends matches the color of the TV ports.

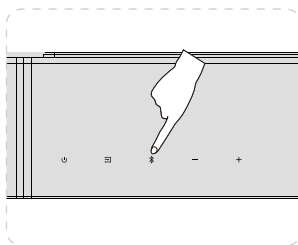
Note: Please remember to unplug the AUX cable from TV and Soundbar when you want to switch other mode.

In Optical Mode: If there is no sound, try setting the TV audio output to PCM: TV Settings > Home > Settings > Sound > Digital Audio Output > PCM

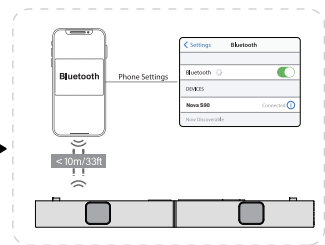
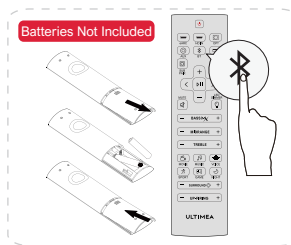
7 CONNECT TO BLUETOOTH

- 1 Press the "Bluetooth" button on the soundbar or remote control to enter Bluetooth pairing mode.
- 2 Go to the Bluetooth setting on your phone, find and select "Nova S90" to connect the soundbar.

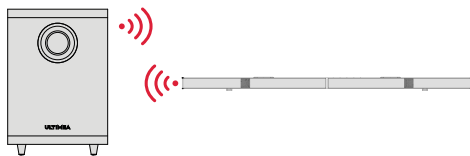
Note: If it's already in the Bluetooth mode and connected, press and hold "Bluetooth" button for 3 seconds to disconnect current device and choose to connect to a new device manually on your mobile phone / PC / TV.



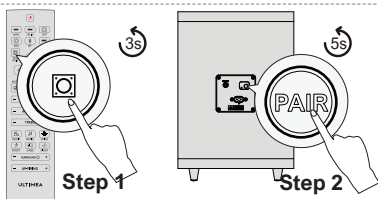
or



8 PAIRING SUBWOOFER



The subwoofer has been paired with the soundbar in the factory. However, you may need to re-pair it if there is no sound coming from the subwoofer.



Step 1

Press and hold the "SUB PAIR" button on the remote control for 3 seconds, until the soundbar shows "SUB" flashing in the front.

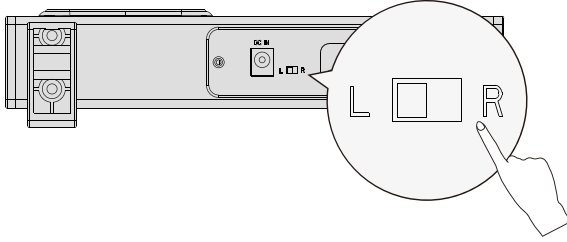
Step 2

Press and hold the "PAIR" button on the subwoofer for 5 seconds, until the white LED light is flashing. The subwoofer is paired successfully when the white LED light is solid on.

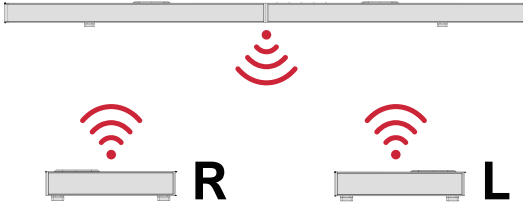
Note: The "SUB OUT" interface on the subwoofer is a reserved port. If you seek an enhanced bass experience, you can purchase an additional active subwoofer independently and connect it to this interface to upgrade your bass system, achieving the optimal bass effect you desire.

9 PAIRING SURROUND SPEAKER

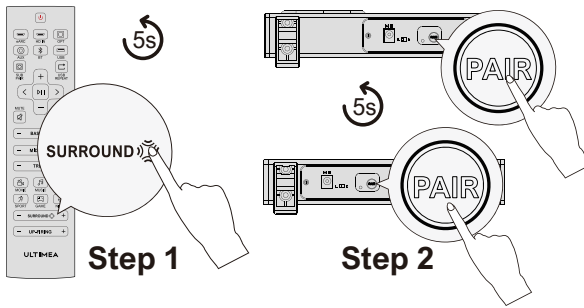
EN



For a better listening experience, before doing the pairing, kindly make sure the buttons on the back of the surround speakers are switched one to "L" and the other to "R".



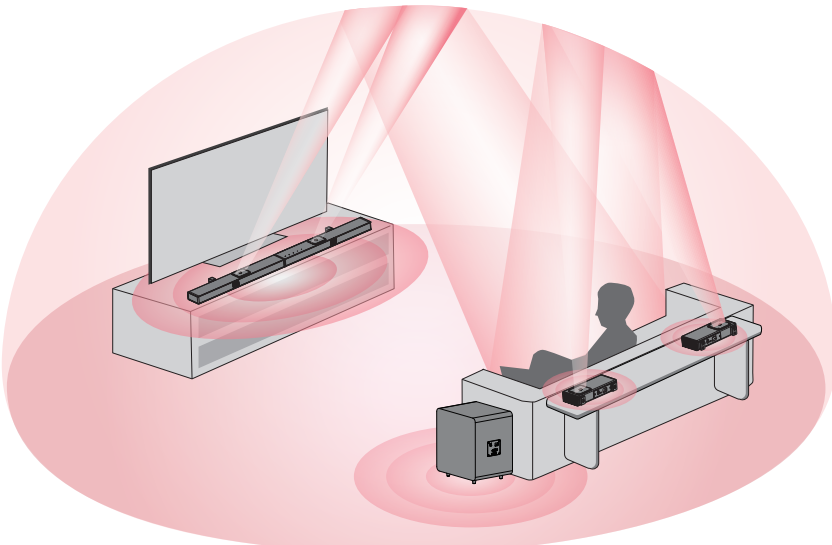
The surround speakers have been paired with the soundbar in the factory. However, you may need to re-pair it if there is no sound coming from the surround speakers.



Step 1
Press and hold the "SURROUND" button on the remote control for 5 seconds, until the soundbar shows "SUR" flashing in the front.

Step 2
Press and hold the "PAIR" button on the surround speakers for 5 seconds, until the white LED light is flashing. The surround speaker is paired successfully when the white LED light is solid on.

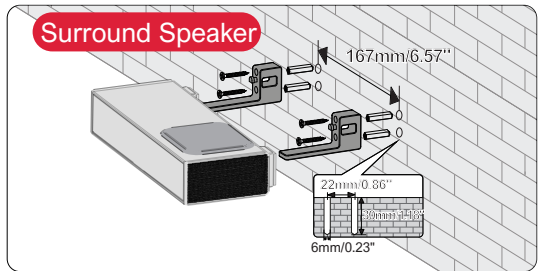
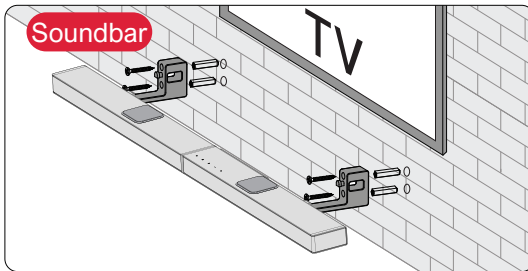
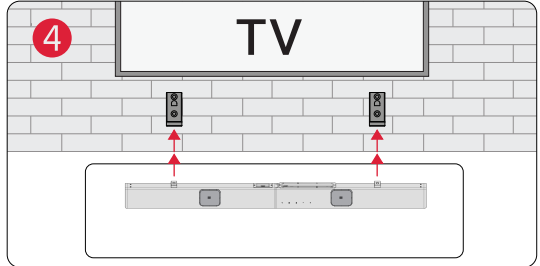
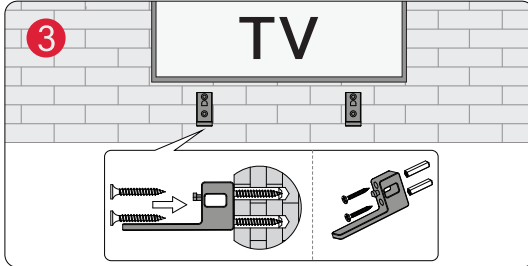
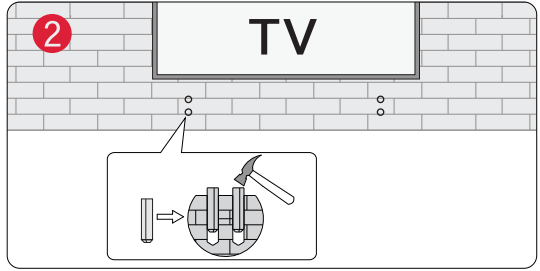
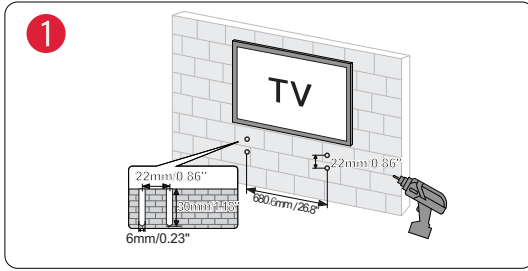
10 PLACEMENT OPTIONS




The soundbar and surround speakers should be placed at or near ear level.

11 WALL MOUNT INSTALLATION

EN



 **Note:** Please use the HDMI Adaptor for easy plugging and unplugging of the HDMI Cable.

12 SPECIFICATIONS

Model Number	U4420
Power Supply	AC 100-240V, ~50/60Hz
Soundbar Drivers	(3.1" x 1.2") x 5 (Soundbar) + 1.8" x 4 (upward-firing Driver) + (3.1" x 1.2") x 2 (Surround Speaker) + 8" (Subwoofer)
Frequency Response	35Hz - 18kHz
Standby Power	<0.5W
Operating Temperature	0°C - 45°C / 32°F - 113°F
Bluetooth Version	5.3

Dimensions and Weight		
Soundbar	1008 (W) x 38 (H) x 76 (D)mm	39.7" x 1.5" x 3.0"
Subwoofer	308 (W) x 345 (H) x 237 (D)mm	12.1" x 13.6" x 9.3"
Surround Speaker	205 (W) x 38 (H) x 76 (D)mm	8.1" x 1.5" x 3.0"
Packaging	550 (W) x 314 (H) x 428 (D)mm	21.7" x 12.4" x 16.9"
Net Weight	10kg / 22.05lbs	
Gross Weight	12.6kg / 27.78lbs	

ULTIMEA

Nova S90

Benutzerhandbuch

WIR SIND BEREIT ZU HELFEN



support@ultimea.com

DE



Modell Nr.: U4420

Bevorzugen Sie ein Video-Tutorial?

Video-Anleitung, HANDBUCH
oder Fehlerbehebung auf der
ULTIMEA Website.

@ultimea_official



support.ultimea.com

+1 888-598-8875 (US) Mon-Fri 9am-5pm (PST)
+49 89-628-25828 (EU) Mon-Fri 9am-5pm (CET)

1 ZUBEHÖRLISTE



Subwoofer



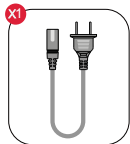
Soundbar



Surround-Lautsprecher x 2



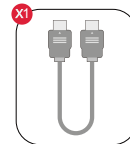
Soundbar-Netzadapter



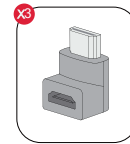
Subwoofer-Netzkabel



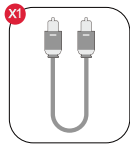
Surround-Lautsprecher
Netzadapter



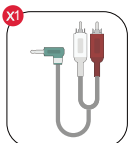
HDMI-Kabel



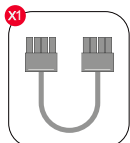
HDMI-Adapter



Optisches Digitalkabel



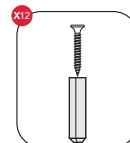
Stereo 3.5mm auf
RCA Audiokabel



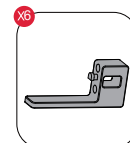
8 poliges Kabel für
Soundbar-Anschluss (140mm)



Fernbedienung



Wandmontage-Kit



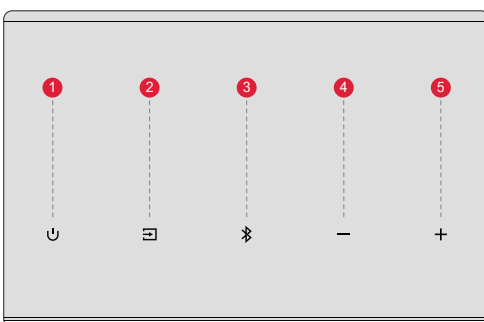
Wandhalterung



Benutzerhandbuch

2 SOUNDBAR-BEDIENELEMENTE

Bedienfeld



- 1 "⏻": Power-Taste**
Drücken Sie die Ein-/Aus-Taste zum Ein-/Ausschalten
- 2 "📺": Eingangsmodus**
Drücken Sie zum Umschalten der Kanäle: eARC-HD 1(HDMI IN1)-HD 2(HDMI IN2)-OPT(OPTISCH)-BT-AUX-USB.
- 3 "📶": BT**
Um zum Bluetooth-Kanal zu wechseln und den Kopplungsmodus zu aktivieren. Halten Sie die Taste 3 Sekunden lang gedrückt, um die Verbindung mit dem aktuellen Gerät zu trennen und sich manuell mit einem neuen Gerät auf Ihrem Mobiltelefon / PC / Fernseher zu verbinden. (BT ID: Nova S90).
- 4 "➡": Lautstärke erhöhen**
- 5 "⬅": Lautstärke verringern**

Fernsteuerung

- 1 "U": **Einschalttaste** Drücken Sie diese Taste, um das Gerät ein- und auszuschalten.
- 2 "eARC": **eARC** Drücken Sie diese Taste, um zum HDMI eARC-Kanal zu wechseln.
- 3 "HD IN": **HD IN** Drücken Sie diese Taste, um zum HDMI IN-Kanal zu wechseln.
- 4 "OPT": **OPT** Drücken Sie diese Taste, um zum OPTICAL-Kanal zu wechseln.
- 5 "AUX": **AUX** Drücken Sie diese Taste, um zum AUX-Kanal zu wechseln.
- 6 "BT": **BT** USB-Modus: Drücken, um zum BLUETOOTH-Kanal zu wechseln.
- 7 "USB": **USB** Drücken, um zum USB-Kanal zu wechseln.
- 8 "SUB PAIR": **SUB PAIR**

Halten Sie die Taste 3 Sekunden lang gedrückt, um die Soundbar in einen Zustand zu versetzen, in dem sie mit dem Subwoofer gekoppelt werden kann.

- 9 "USB REPEAT": **USB REPEAT**
USB-Modus: Drücken Sie diese Taste, um zwischen Einzelschleifenwiedergabe und Listenschleifenwiedergabe zu wechseln.
- 10 "+": **Lautstärke erhöhen**
- 11 "-": **Lautstärke verringern**
- 12 "<": **Zurück** Nur im BT- und USB-Modus: Springt zum vorherigen Titel.
- 13 ">": **Weiter** Nur im BT- und USB-Modus: Zum nächsten Titel springen.
- 14 "II": **Wiedergabe/Pause** Nur für den BT- und USB-Modus.
- 15 "MUTE": **MUTE**

- 16 "LED DIMMER": **LED DIMMER**
Drücken, um die Helligkeit des Displays in 5 Stufen einzustellen. Halten Sie die Taste 3 Sekunden lang gedrückt, um das Display auszuschalten.

- 17 "BASS MAX": **BASSMAX**
Drücken Sie diese Taste, um den Basspegel einzustellen. Auf dem Display wird angezeigt: "BS-6", "BS-5", "BS-4", "BS-3", "BS-2", "BS-1", "BS 0", "BS 1", "BS 2", "BS 3", "BS 4", "BS 5", "BS 6".

- 18 "MIDRANGE": **MITTELTONBEREICH**
Drücken Sie diese Taste, um den Alt-Pegel einzustellen. Auf dem Display erscheint: "MR-6", "MR-5", "MR-4", "MR-3", "MR-2", "MR-1", "MR 0", "MR 1", "MR 2", "MR 3", "MR 4", "MR 5", "MR 6".

- 19 "TREBLE": **TREBLE**
Drücken Sie diese Taste, um die Höhen einzustellen. Auf dem Display erscheint: "TB-6", "TB-5", "TB-4", "TB-3", "TB-2", "TB-1", "TB 0", "TB 1", "TB 2", "TB 3", "TB 4", "TB 5", "TB 6".

- 20 "MOVIE": **MOVIE**
Drücken Sie diese Taste, um in den MOVIE-Modus zu wechseln, auf dem Display erscheint: "MOVIE".

- 21 "MUSIK": **MUSIK**
Drücken Sie diese Taste, um in den MUSIC-Modus zu wechseln, auf dem Display erscheint: "MUSIC".

- 22 "STIMME": **STIMME**
Drücken Sie diese Taste, um in den VOICE-Modus zu wechseln; auf dem Display erscheint: "VOICE".

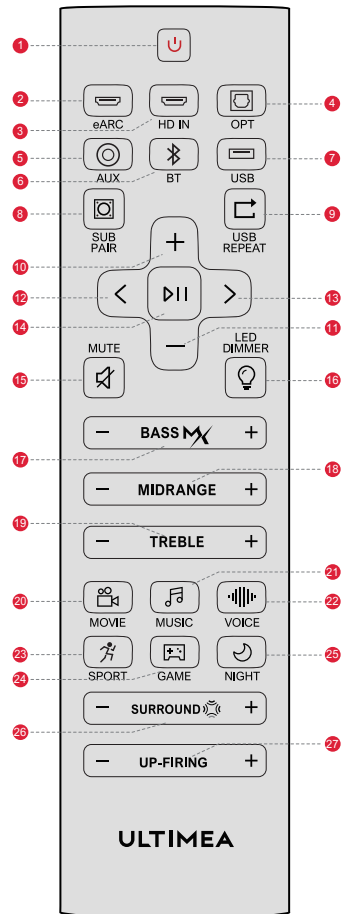
- 23 "SPORT": **SPORT**
Drücken Sie diese Taste, um in den SPORT-Modus zu wechseln, auf dem Display erscheint: "SPORT".

- 24 "SPIEL": **SPIEL**
Drücken Sie diese Taste, um in den GAME-Modus zu wechseln; auf dem Display erscheint: "GAME".

- 25 "NACHT": **NACHT**
Drücken Sie diese Taste, um in den NIGHT-Modus zu wechseln, auf dem Display erscheint: "NIGHT".

- 26 "SURROUND": **SURROUND**
Drücken Sie diese Taste, um den Surround-Sound-Pegel einzustellen; auf dem Display wird angezeigt: "SR-6", "SR-5", "SR-4", "SR-3", "SR-2", "SR-1", "SR 0", "SR 1", "SR 2", "SR 3", "SR 4", "SR 5", "SR 6".

- 27 "UP-FIRING": **UP-FIRING**
Drücken Sie, um die Lautstärke der Aufwärtslautsprecher anzupassen, wird auf dem Display angezeigt: "UP-3", "UP-2", "UP-1", "UP 0", "UP 1", "UP 2", "UP 3".

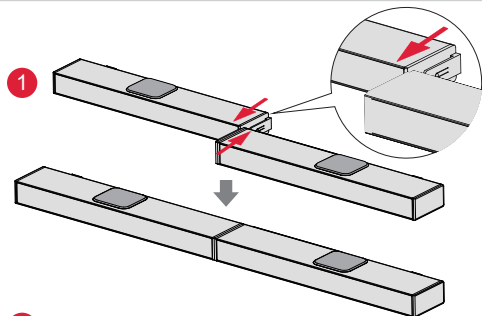


3 SOUNDBAR-INSTALLATION

Montageschritte

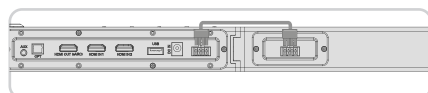
Schritt 1

Stellen Sie die beiden Teile der Soundbar auf die gleiche Höhe und richten Sie die Verbindungsstellen aus. Verbinden Sie die beiden Teile durch paralleles Schieben, um sie zu einem Stück zusammenzufügen.



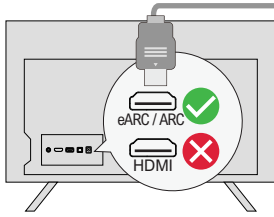
Schritt 2

8-pin Kabel einstecken.



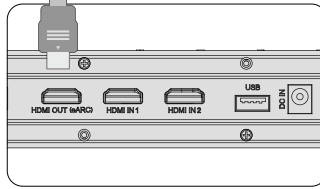
4 ANSCHLUSS AN DEN TV VIA HDMI OUT eARC / ARC

DE



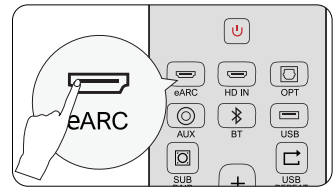
Schritt 1:

Schließen Sie ein Ende des HDMI-Kabels an den eARC / ARC Anschluss auf der Rückseite Ihres Fernsehers an.



Schritt 2:

Schließen Sie dann das andere Ende an den HDMI (eARC)-Anschluss der Soundbar an.



Schritt 3:

Drücken Sie die Taste "eARC" auf der Fernbedienung, um den Eingang "HDMI OUT (eARC)" auszuwählen.

Hinweis:

Vergewissern Sie sich, dass Ihr Fernsehgerät eARC unterstützt, sonst kann das Dolby Atmos-Audiosignal nicht übertragen werden.

Atmos: Wenn Sie einen Film im Dolby Atmos-Format ansehen, stellen Sie bitte den Audioausgang an Ihrem Fernseher auf Pass Through: TV-Einstellungen > Home > Einstellungen > Ton > Digitaler Audioausgang > Pass Through

DTS: Wenn Sie sich einen Film im DTS-Format ansehen, stellen Sie den Audioausgang an Ihrem Fernseher bitte auf PCM: TV-Einstellungen > Home > Einstellungen > Ton > Digitaler Audioausgang > PCM

Was ist der Unterschied zwischen: HDMI IN, HDMI ARC, HDMI eARC?

HDMI IN ist ein Standard-HDMI-Eingang, über den Sie Geräte an Ihren Fernseher oder Ihr Audiosystem anschließen können. Er unterstützt Audio- und Videosignale, aber keine Audio-Rückkanal- (ARC) oder erweiterte Audio-Rückkanal- (eARC) Funktionalität.

HDMI ARC ist ein spezieller HDMI-Anschluss, der die Zwei-Wege-Kommunikation zwischen Ihrem Fernsehgerät und Ihrem Audiosystem unterstützt. Das bedeutet, dass Audiosignale von Ihrem Fernseher an Ihr Audiosystem gesendet werden können und das Audiosystem Audiosignale zurück an Ihren Fernseher senden kann.

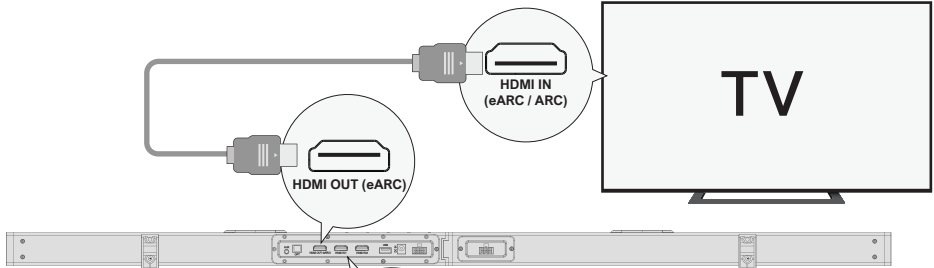
HDMI eARC (Enhanced Audio Return Channel) ist eine aktualisierte Version von HDMI ARC, die höherwertige Audioformate wie Dolby Atmos und DTS:X unterstützt.

Hinweis: Bitte schalten Sie die "CEC"-Funktion an Ihrem Fernseher ein.

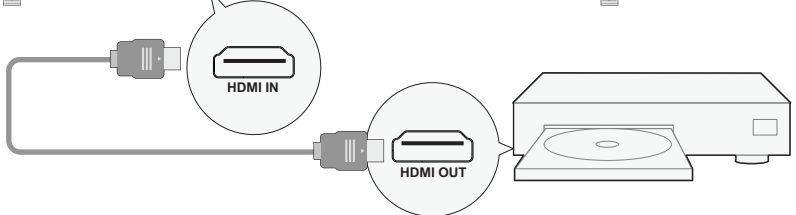
Wenn eARC / ARC angeschlossen ist, kann Ihre TV-Fernbedienung die Soundbar und den Fernseher gleichzeitig steuern: ① Einschalten / Ausschalten ② Lautstärke einstellen

5 ANSCHLUSS AN EIN ANDERES GERÄT ÜBER HDMI IN1 / HDMI IN2

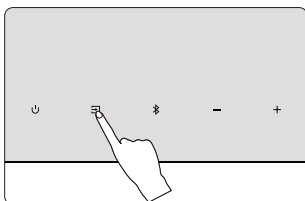
Schritt 1



Schritt 2



Schritt 3



Schritt 1: Verbinden Sie das HDMI-Kabel mit dem Anschluss HDMI OUT (eARC) an der Soundbar und das andere Ende mit dem Anschluss eARC / ARC am Fernsehgerät.

Schritt 2: Verbinden Sie das HDMI-Kabel mit dem HDMI OUT-Anschluss des anderen Geräts (z. B. DVD oder Spielkonsole) und das andere Ende mit dem HDMI IN1 / HDMI IN2-Anschluss der Soundbar.

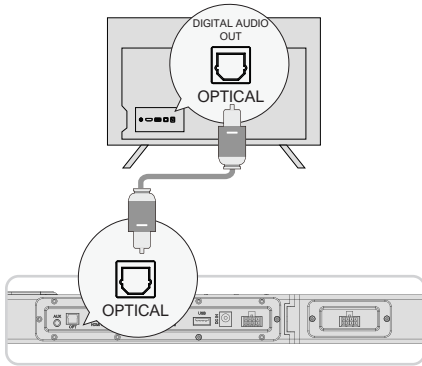
Schritt 3: Drücken Sie die Taste "HDMI" auf der Soundbar oder der Fernbedienung, um zum HDMI IN1 / HDMI IN2 Kanal zu wechseln.

Anmerkung: Der HDMI-Anschluss Ihres Fernsehers muss eARC unterstützen, um das Dolby ATMOS-Audioformat an Ihre Soundbar zu übertragen.

6 ANSCHLUSS AN FERNSEHER ÜBER OPTISCH / AUX

DE

OPTISCH



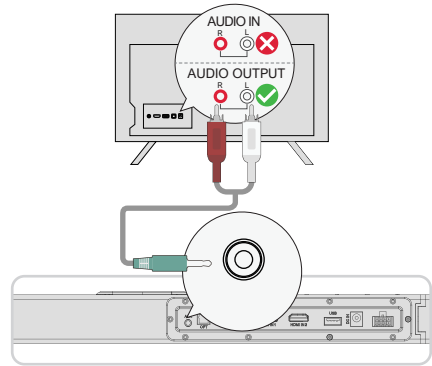
OPTION 1: OPTISCH

- 1 Stellen Sie sicher, dass das Kabel an den OPTICAL OUT-Anschluss Ihres Fernsehers und das andere Ende an den OPTICAL-Anschluss der Soundbar angeschlossen ist.
- 2 Vergewissern Sie sich, dass der optische Stecker richtig eingesteckt ist, wie auf dem Bild zu sehen. Stecken Sie den Stecker nicht verkehrt herum ein, um das optische Kabel nicht zu beschädigen.

Hinweis: Wenn der Ton aus den internen TV-Lautsprechern kommt, schalten Sie die TV-Lautstärke stumm oder minimieren Sie sie.

Im optischen Modus: Wenn kein Ton zu hören ist, versuchen Sie, den Audioausgang des Fernsehers auf PCM einzustellen:
TV-Einstellungen > Strateiseinstellungen > Ton > Digitaler Audioausgang > PCM

AUX



OPTION 2: AUX

- 1 Schließen Sie das 3,5-mm-Cinch-Audiokabel an den RCA-AUDIO OUT-Anschluss Ihres Fernsehers an.
- 2 Achten Sie darauf, dass die Farbe der Kabelenden mit der Farbe des TV-Anschlüsse übereinstimmen.

Hinweis: Bitte denken Sie daran, das AUX-Kabel vom Fernseher und der Soundbar zu trennen, wenn Sie in einen anderen Modus wechseln möchten.

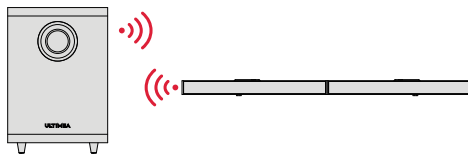
7 MIT BLUETOOTH VERBINDEN

- 1 Drücken Sie die Taste "Bluetooth" auf der Soundbar oder der Fernbedienung, um den Bluetooth-Kopplungsmodus zu aktivieren.
- 2 Öffnen Sie die Bluetooth-Einstellungen Ihres Telefons, suchen und wählen Sie "Nova S90", um die Soundbar zu verbinden.

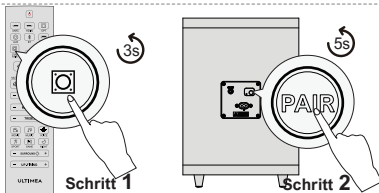
Hinweis: Wenn sich das Gerät bereits im Bluetooth-Modus befindet und verbunden ist, halten Sie die Taste "Bluetooth" 3 Sekunden lang gedrückt, um die Verbindung mit dem aktuellen Gerät zu trennen und manuell eine Verbindung mit einem neuen Gerät auf Ihrem Mobiltelefon / PC / Fernseher herzustellen.



8 SUBWOOFER KOPPELN



Der Subwoofer wurde werkseitig mit der Soundbar gekoppelt. Sie müssen ihn jedoch möglicherweise erneut koppeln, wenn aus dem Subwoofer kein Ton kommt.



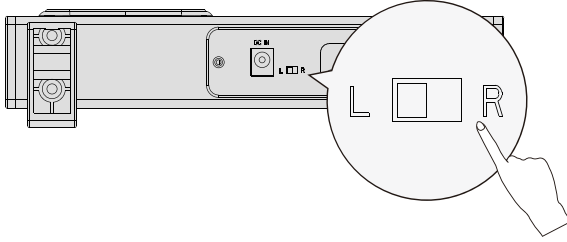
Schritt 1
Halten Sie die Taste "SUB PAIR" auf der Fernbedienung 3 Sekunden lang gedrückt, bis auf der Vorderseite der Soundbar "SUB PAIR" blinkt.

Schritt 2
Halten Sie die "PAIR"-Taste am Subwoofer 5 Sekunden lang gedrückt, bis die weiße LED-Anzeige blinkt. Der Subwoofer ist erfolgreich gepaart, wenn die weiße LED-Anzeige dauerhaft leuchtet.

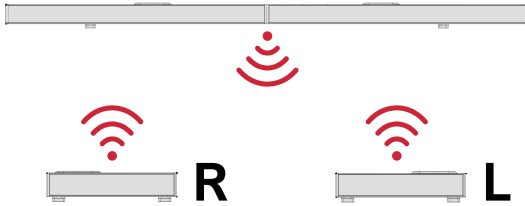
Hinweis: Der 'SUB OUT'-Anschluss am Subwoofer ist ein reservierter Port. Wenn Sie eine verbesserte Bass-Erfahrung wünschen, können Sie unabhängig einen zusätzlichen aktiven Subwoofer erwerben und ihn an diesen Anschluss anschließen, um Ihr Bass-System zu verbessern und den optimalen Bass-Effekt zu erzielen, den Sie sich wünschen.

9 KOPPLUNG DER SURROUND-LAUTSPRECHER

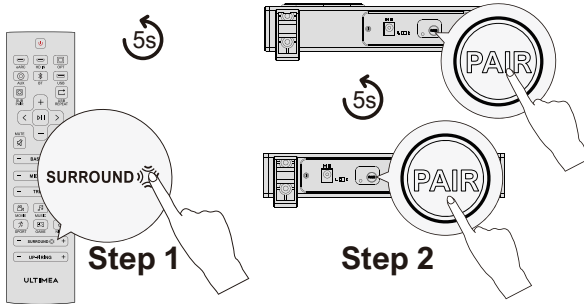
DE



Für ein besseres Hörerlebnis vergewissern Sie sich bitte vor der Kopplung, dass die Tasten auf der Rückseite der Surround-Lautsprecher auf "L" und "R" eingestellt sind.



Die Surround-Lautsprecher wurden werkseitig mit der Soundbar gepaart. Sie müssen das Pairing jedoch möglicherweise erneut durchführen, wenn kein Ton aus den Surround-Lautsprechern kommt.



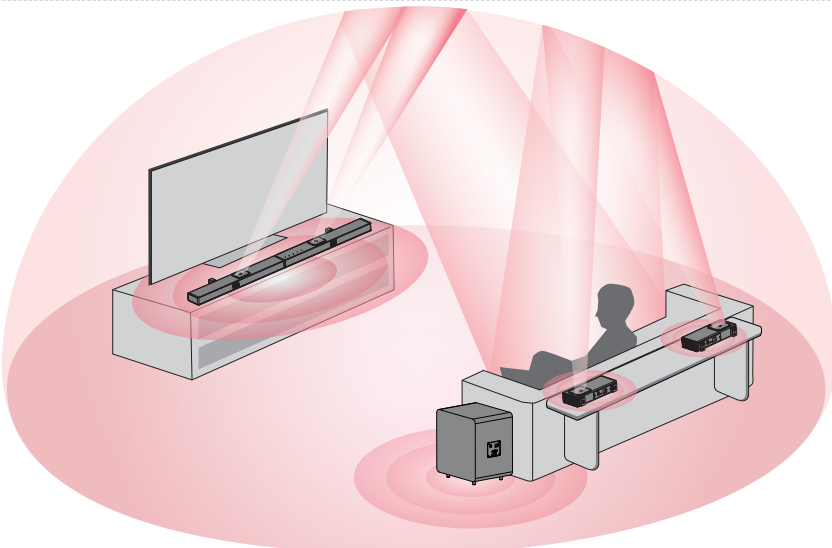
Schritt 1

Halten Sie die Taste "SURROUND" auf der Fernbedienung 5 Sekunden lang gedrückt, bis auf der Vorderseite der Soundbar "SUR" blinkt.

Schritt 2

Halten Sie die "PAIR"-Taste an den Surround-Lautsprechern 5 Sekunden lang gedrückt, bis die weiße LED-Anzeige blinkt. Der Surround-Lautsprecher ist erfolgreich gepaart, wenn die weiße LED-Anzeige dauerhaft leuchtet.

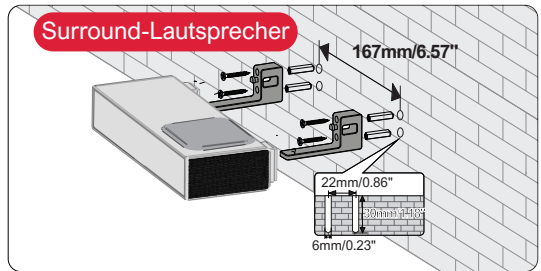
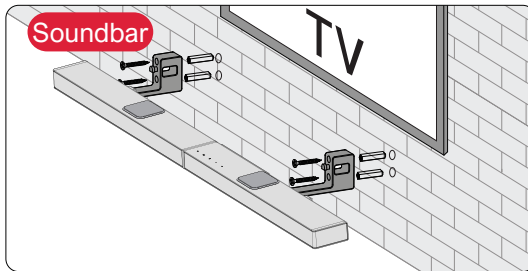
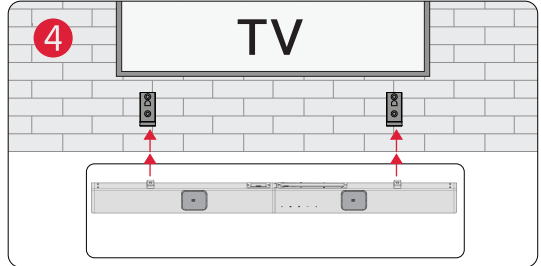
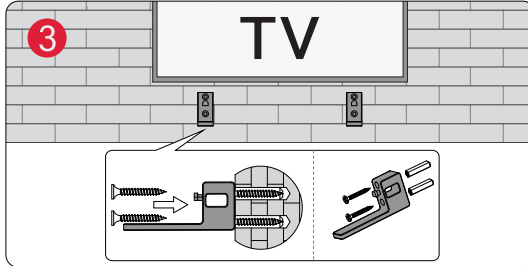
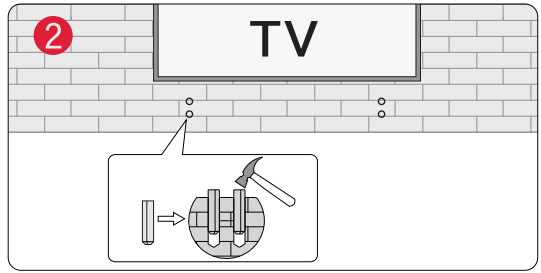
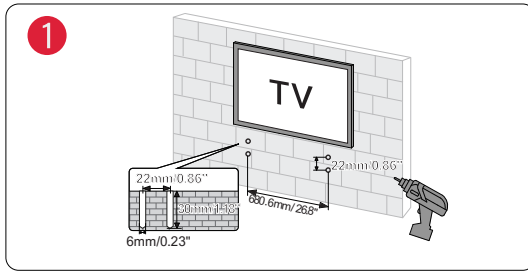
10 PLATZIERUNGSMÖGLICHKEITEN



Die Soundbar und die Surround-Lautsprecher sollten in Ohrhöhe oder in der Nähe der Ohren aufgestellt werden.

11 WANDBEFESTIGUNG

DE



Hinweis: Bitte verwenden Sie den HDMI-Adapter, um das HDMI-Kabel einfach ein- und ausstecken zu können.

12 SPEZIFIKATIONEN

Modell-Nummer	U4420
Stromversorgung	AC 100-240V, ~50/60Hz
Soundbar-Treiber	(3.1" x 1.2") x 5 (Soundbar)+ 1.8" x 4 (aufwärts gerichtete Treiber) + (3.1" x 1.2") x 2 (Surroundbar Speaker) +8" (Subwoofer)
Frequenzgang	35Hz - 18kHz
Standby-Leistung	<0.5W
Betriebstemperatur	0°C - 45°C / 32°F - 113°F
Bluetooth Vision	5.3

Abmessungen und Gewicht	
Soundbar	1008 (W) x 38 (H) x 76 (D)mm 39.7" x 1.5" x 3.0"
Subwoofer	308 (W) x 345 (H) x 237 (D)mm 12.1" x 13.6" x 9.3"
Surround-Lautsprecher	205 (W) x 38 (H) x 76 (D)mm 8.1" x 1.5" x 3.0"
Verpackung	550 (W) x 314 (H) x 428 (D)mm 21.7" x 12.4" x 16.9"
Nettogewicht	10kg / 22.05lbs
Bruttogewicht	12.6kg / 27.78lbs

ULTIMEA

Nova S90

ユーザーマニュアル

お手伝
いた
します



support@ultimea.com

JP



モデル番号: U4420

ビデオチュートリアル をご希望ですか?

セットアップガイドンスのビデオ、またはULTIMEAウェブサイトのユーザーマニュアルをご覧ください。



support.ultimea.com

📧 📺 📺 📺 📺
@ultimea_official

+1 888-598-8875 (US) Mon-Fri 9am-5pm (PST)
+49 89-628-25828 (EU) Mon-Fri 9am-5pm (CET)

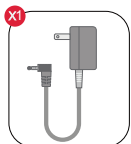
1 アクセサリーリスト



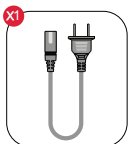
サブウーファー

サウンドバー

サラウンドスピーカー×2



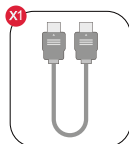
サウンドバー
電源アダプター



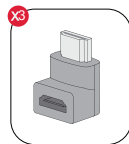
サブウーファー
電源ケーブル



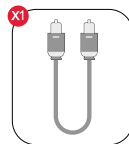
サラウンドスピーカー
電源アダプター



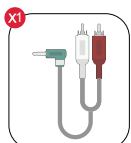
HDMIケーブル



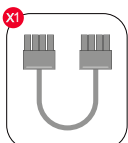
HDMIアダプター



デジタル光ケーブル



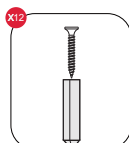
3.5mm-RCAオーディオケーブル



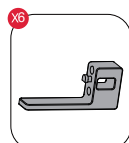
サウンドバー接続用8ピンケーブル(140mm)



リモコン



壁掛けネジキット



壁掛け固定スタンド

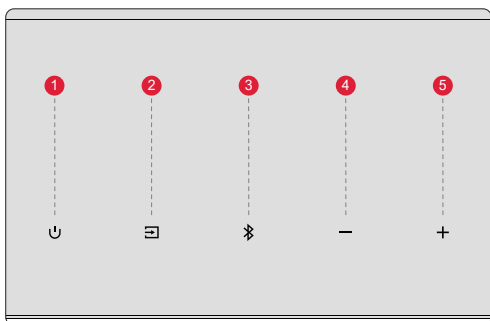


ユーザーマニュアル

2 サウンドバーのコントロール

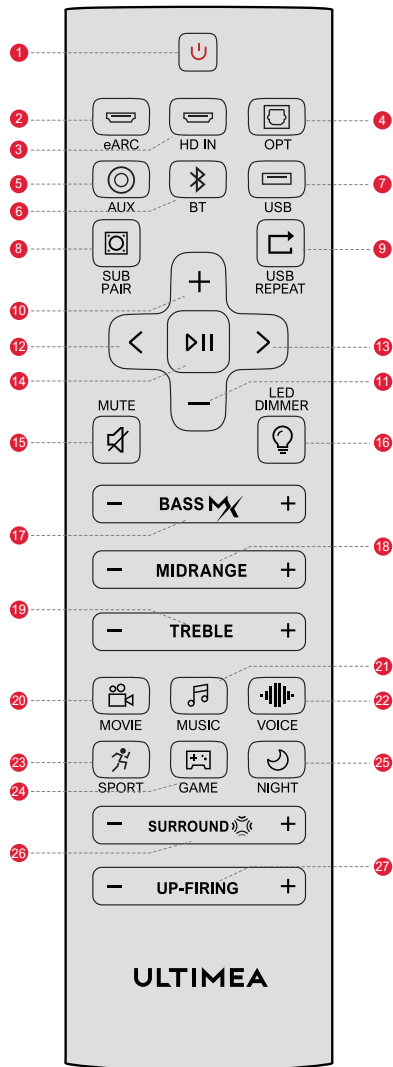
コントロールパネル

- 1 “”：電源ボタン
電源ボタンを押すとオン/オフになります。
- 2 “”：「入力モード」
押してチャンネルを切り替える：eARC-HD 1(HDMI IN1)-HD 2(HDMI IN2)-opt(optical)-bt-aux-usb。
- 3 “”：BT
を押すとBTチャンネルに切り替わります。
(BT ID: Nova S90)。
- 4 “”：ボリュームダウン
- 5 “”：ボリューム・アップ



リモコン

- 1 “**U**”：電源ボタン 一回押すと電源がオン/オフ
- 2 “**eARC**”：eARC 一回押すとHDMI eARCに切り替え
- 3 “**HD IN**”：HD IN 一回押すとHDMI INに切り替え
- 4 “**OPT**”：OPT 一回押すとOPTICALに切り替え
- 5 “**AUX**”：AUX 一回押すとAUXに切り替え
- 6 “**BT**”：BT 一回押すとBLUETOOTHに切り替え
- 7 “**USB**”：USB 一回押すとUSBに切り替え
- 8 “**SUB PAIR**”
3秒間押すと、サウンドバーがサブウーファーとペアリングできる状態になり
- 9 “**USB リピート**”
USBモード：一回押すと、ワンループ再生とリストループ再生に切り替え
- 10 “**+**”：ボリュームアップ
- 11 “**-**”：ボリュームダウン
- 12 “**<**”：前 BTおよびUSBモードのみ：前の曲へスキップ
- 13 “**>**”：次へ BTおよびUSBモードのみ：次の曲へスキップ
- 14 “**⏸**”：再生/一時停止 BTおよびUSBモードのみ
- 15 “**🔇**”：ミュート
- 16 “**💡**”：LEDディマー
一回押すと5段階でディスプレイの明るさを調節でき3秒間押すと消灯する
- 17 “**BASS MAX**”
ディスプレイには：“B5-6”、“B5-5”、“B5-4”、“B5-3”、“B5-2”、“B5-1”、“B5 0”、“B5 1”、“B5 2”、“B5 3”、“B5 4”、“B5 5”、“B5 6”。
- 18 “**MIDRANGE**”：ミッドレンジ
ディスプレイには：“MR-6”、“MR-5”、“MR-4”、“MR-3”、“MR-2”、“MR-1”、“MR 0”、“MR 1”、“MR 2”、“MR 3”、“MR 4”、“MR 5”、“MR 6”。
- 19 “**TREBLE**”：TREBLE
ディスプレイには：“TJ-6”、“TJ-5”、“TJ-4”、“TJ-3”、“TJ-2”、“TJ-1”、“TJ 0”、“TJ 1”、“TJ 2”、“TJ 3”、“TJ 4”、“TJ 5”、“TJ 6”。
- 20 “**MOVIE**”
MOVIEモードに切り替わり：ディスプレイにMOVIEと表示され
- 21 “**MUSIC**”
MUSICモードに切り替わり：ディスプレイにMUSICと表示され
- 22 “**VOICE**”
VOICEモードに切り替わり：ディスプレイにVOICEと表示され
- 23 “**SPORT**”
SPORTモードに切り替わり：ディスプレイにSPORTと表示され
- 24 “**GAME**”
GAMEモードに切り替わり：ディスプレイにGAMEと表示され
- 25 “**NIGHT**”
NIGHTモードに切り替わり：ディスプレイにNIGHTと表示され
- 26 “**SURROUND**”：サラウンド
サラウンドサウンドレベル調整：
“SR-6”、“SR-5”、“SR-4”、“SR-3”、“SR-2”、“SR-1”、“SR 0”、“SR 1”、“SR 2”、“SR 3”、“SR 4”、“SR 5”、“SR 6”。
- 27 “**UP-FIRING**”：UP-FIRING
上向き音量レベルを調整するには押ししてください、ディスプレイには次のように表示されます：
“UP-3”、“UP-2”、“UP-1”、“UP 0”、“UP 1”、“UP 2”、“UP 3”。

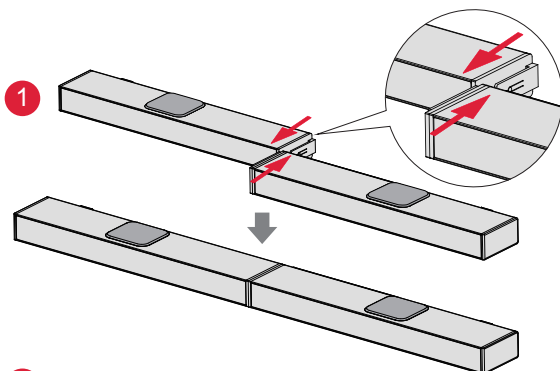


3 サウンドバー設置

組み立て手順

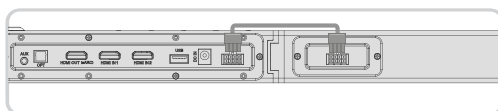
ステップ 1

サウンドバーの2つのパーツを同じ高さにセットし、接続部の位置を合わせます。2つのパーツを平行に押しつけて接続し、1つのパーツとして組み合わせます。

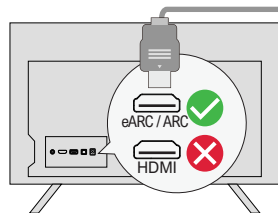


ステップ 2

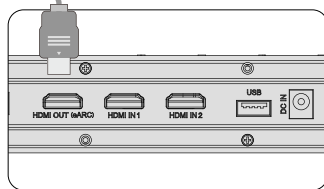
プラグイン8ピンケーブル



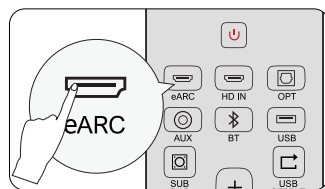
4 HDMI出力でテレビに接続 eARC / ARC



ステップ 1:
HDMIケーブルの一端をテレビ背面のeARC / ARCポートに接続します。



ステップ 2:
もう一方の端をサウンドバーのHDMI(eARC)ポートに接続します。



ステップ 3:
リモコンの "eARC" ボタンを押して "HDMI OUT (eARC)" 入力を選択します。

注意:

テレビのHDMIがeARCをサポートしていることを確認してください。そうでない場合、Dolby Atmosオーディオ信号を伝送することはできません。

Atmos: Dolby Atmosフォーマットの映画を視聴する場合は、テレビの音声出力をパススルーに設定してください:

テレビの設定 > ホーム > 設定 > サウンド > デジタル音声出力 > パススルー

DTS: DTSフォーマットの映画を視聴する場合、テレビの音声出力をPCMに設定してください:

テレビの設定 > ホーム > 設定 > サウンド > デジタル音声出力 > PCM

HDMI IN、HDMI ARC、HDMI eARCの違いは何ですか? HDMI IN、HDMI ARC、HDMI eARCの違いは何ですか?

HDMI IN は、テレビやオーディオシステムに機器を接続するための標準的なHDMI入力です。オーディオとビデオ信号に対応していますが、オーディオ・リターン・チャンネル (ARC) やエンハンスト・オーディオ・リターン・チャンネル (eARC) 機能には対応していません。

HDMI ARC は、テレビとオーディオシステム間の双方向通信を可能にする特別なHDMIポートです。つまり、テレビからオーディオ・システムに音声を送り、オーディオ・システムからテレビに音声を送り返すことができます。

HDMI eARC (Enhanced Audio Return Channel) は、Dolby AtmosやDTS:Xなどの高品質オーディオフォーマットをサポートするHDMI ARCのアップデートバージョンです。

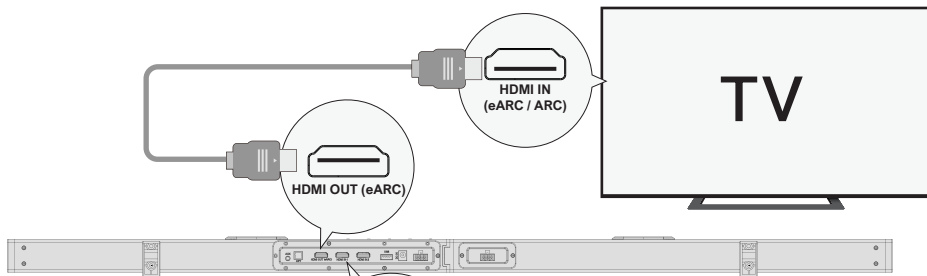
注: テレビの「CEC」機能をオンにしてください。

eARC / ARCが接続されている場合、テレビのリモコンでサウンドバーとテレビを同時に操作できます:

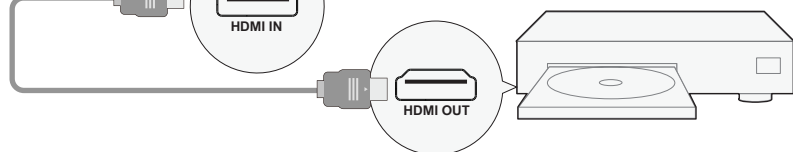
- ① 電源オン/オフ
- ② 音量調整

5 HDMI入力で他の機器に接続する

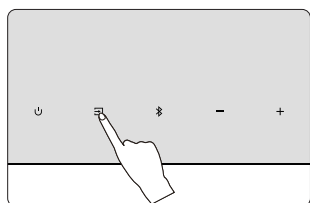
ステップ 1



ステップ 2



ステップ 3



ステップ 1: HDMIケーブルをサウンドバーのHDMI OUT (eARC)ポートに接続し、もう一方をテレビのeARC / ARCポートに接続します。

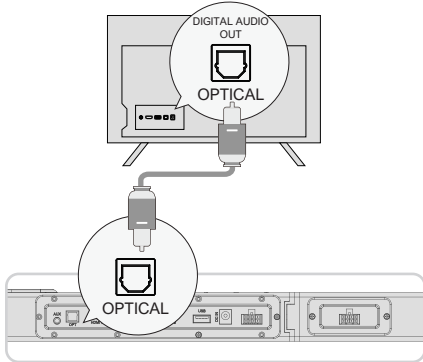
ステップ 2: HDMIケーブルを他の機器 (DVDやゲーム機など) のHDMI OUTポートに接続し、もう一方をサウンドバーのHDMI IN1 / HDMI IN2ポートに接続します。

ステップ 3: サウンドバーまたはリモコンの "TV" ボタンを押して、HDMI IN1 / HDMI IN2チャンネルに切り替えます。

注意: Dolby ATMOSオーディオ・フォーマットをサウンドバーに伝送するには、TVHDMIがeARCをサポートしている必要があります。

6 オプティカル/AUXでテレビに接続

光学式



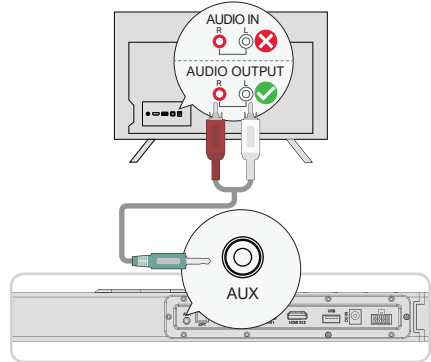
オプション1: 光学式

① テレビのポートがOPTICAL OUTであることを確認し、ケーブルの両側をテレビとサウンドバーの両方でOPTICALに接続します。

② コードの差し込み口が写真のように正しく差し込まれていることを確認してください。
(間違っただけで差し込むと破損する恐れがあります)

注: 接続した後、テレビのスピーカーからも音声が再生される場合は、テレビの音量をミュートまたは最小にしてください。

AUX



オプション2: AUX

① 3.5mmオーディオケーブルをテレビのRCA AUDIO OUTポートに接続します。

② ケーブルの端の色がテレビのポートの色と同じであることを確認してください。ポートに接続してください。

注: 他のモードに切り替える場合は、テレビとサウンドバーからAUXケーブルを抜いてください。

オプティカルモード: 音が出ない場合は、テレビの音声出力をPCMに設定してください:
TV設定>ホーム>設定>サウンド>デジタル音声出力>PCM

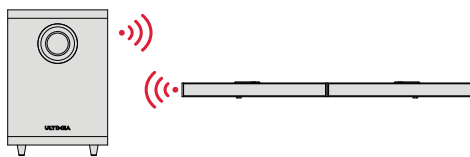
7 ブルートゥース接続

- ① サウンドバーまたはリモコンの "Bluetooth" ボタンを押してBluetoothペアリングモードに入ります。
- ② 携帯電話のBluetooth設定を開き、"Nova S90" を見つけて選択し、サウンドバーを接続します。

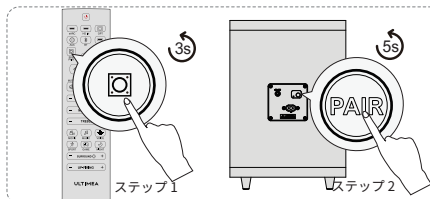
注: すでにBluetoothモードで接続されている場合は、"Bluetooth" ボタンを3秒間長押しして、現在のデバイスを切断し、携帯電話/PC/テレビで手動で新しいデバイスに接続します。



8 ペアサブウーファー



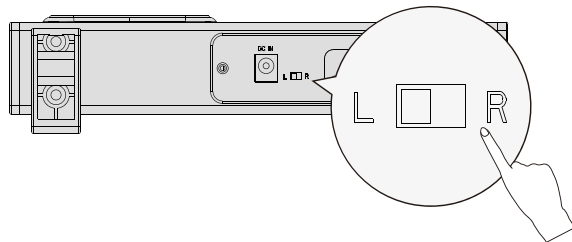
サブウーファーはサウンドバー工場とペアリングされています。しかし、サブウーファーから音が出ない場合は、再度ペアリングする必要があります。



ステップ1
サウンドバーの前面に「SUB」が点滅するまで、リモコンの「SUB PAIR」ボタンを3秒間長押しします。
ステップ2
白いLEDライトが点滅するまで、サブウーファーの「PAIR」ボタンを5秒間長押ししてください。サブウーファーの白いLEDライトが点灯すると、ペアリングは成功です。

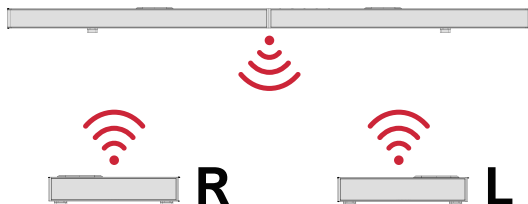
注意: サブウーファーの「SUB OUT」インターフェースは予約済みのポートです。より強力な低音体験をお求めの場合は、別途アクティブサブウーファーを個別に購入し、このインターフェースに接続して、お望みの最適な低音効果を実現できます。

9 サラウンドスピーカーのペアリング

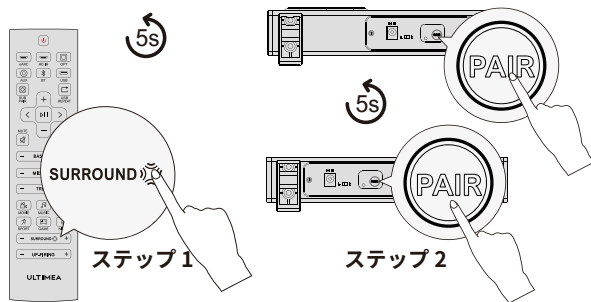


より良いリスニング体験のために、ペアリングを行う前に、サラウンドスピーカーの背面にあるボタンが「L」と「R」に切り替わっていることを確認してください。

JP

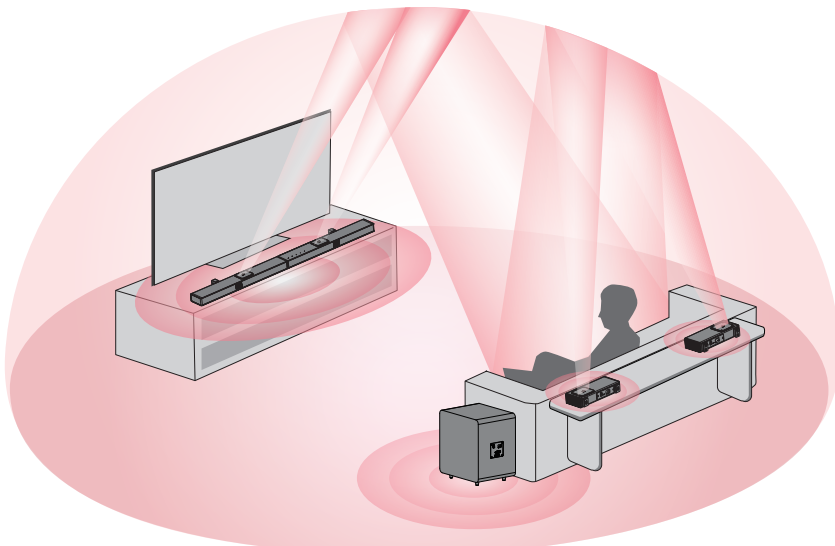


サラウンドスピーカーは工場出荷時にサウンドバーとペアリングされています。ただし、サラウンドスピーカーから音が出ない場合は、ペアリングをやり直す必要があります。



ステップ1
サウンドバーの前面に“SURROUND”が点滅するまで、リモコンの“SUR”ボタンを5秒間押し続けます。
ステップ2
白いLEDライトが点滅するまで、サラウンドスピーカーの「PAIR」ボタンを5秒間長押しします。白いLEDライトが点灯すると、サラウンドスピーカーのペアリングは成功です。

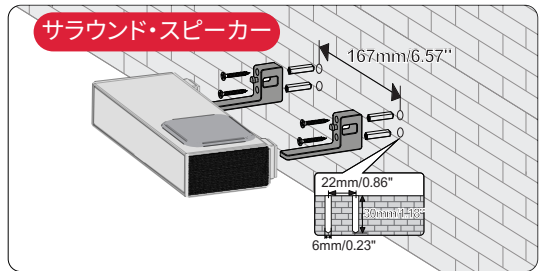
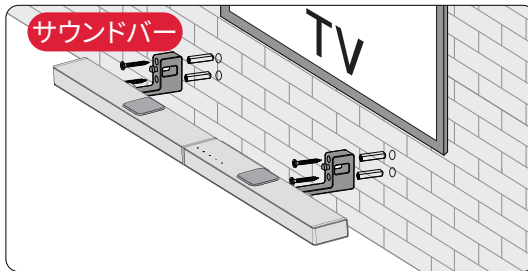
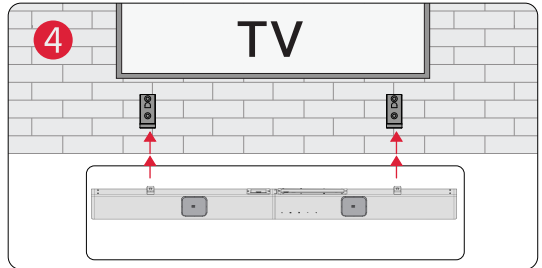
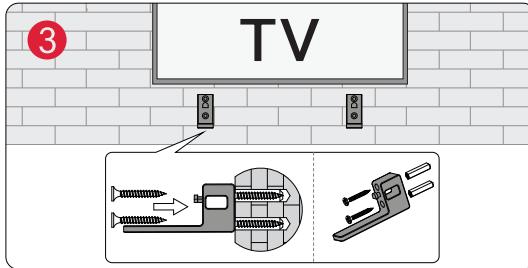
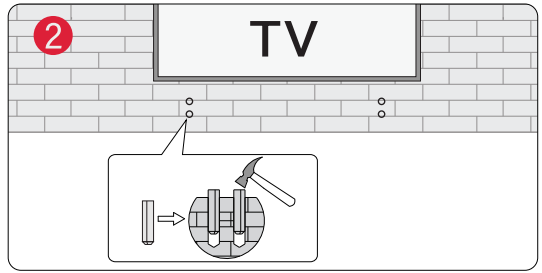
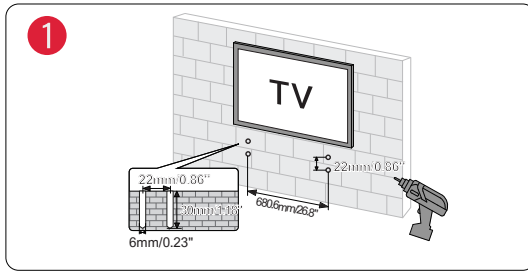
10 配置オプション




サウンドバーとサラウンドスピーカーは、耳の高さか、その近くに設置してください。

11 壁掛け設置

JP



 注意事項: HDMIケーブルの抜き差しを簡単にするために、HDMIアダプターをご使用ください。

12 仕様

モデル番号	U4420
電源	AC 100-240V, ~50/60Hz
サウンドバードライバー	(31インチ×12インチ) ×5 (サウンドバー) +18インチ×4 (上向きドライバー) + (31インチ×12インチ) ×2 (サラウンドベースピーカー) +8インチ (サブウーファー)
周波数特性	35Hz - 18kHz
スタンバイ電力	<0.5W
動作温度	0°C - 45°C / 32°F - 113°F
ブルートゥース・バージョン	5.3

サウンドバー	1008 (W) x 38 (H) x 76 (D)mm	39.7" x 1.5" x 3.0"
サブウーファー	308 (W) x 345 (H) x 237 (D)mm	12.1" x 13.6" x 9.3"
サラウンドスピーカー	205 (W) x 38 (H) x 76 (D)mm	8.1" x 1.5" x 3.0"
パッケージ	550 (W) x 314 (H) x 428 (D)mm	21.7" x 12.4" x 16.9"
正味重量	10kg / 22.05lbs	
総重量	12.6kg / 27.78lbs	

ULTIMEA

Nova S90

Manuel de l'utilisateur



Numéro de modèle : U4420

NOUS SOMMES PRÊTS À VOUS AIDER



support@ultimea.com

FR

Vous préférez un tutoriel vidéo ?

Vidéo d'aide à l'installation, ou MANUEL D'UTILISATION sur le site web d'ULTIMEA.

@ultimea_official



support.ultimea.com

+1 888-598-8875 (US) Mon-Fri 9am-5pm (PST)
+49 89-628-25828 (EU) Mon-Fri 9am-5pm (CET)

1 LISTE D'ACCESSOIRES



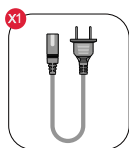
Caisson de basse

Barre de son

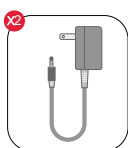
Enceinte surround x 2



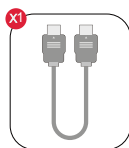
Adaptateur d'alimentation de la barre de son



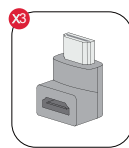
Câble d'alimentation du caisson de basse



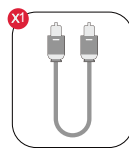
Adaptateur d'alimentation de l'enceinte surround



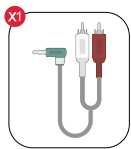
Câble HDMI



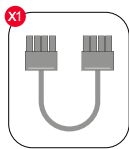
Adaptateur HDMI



Câble Optique Numérique



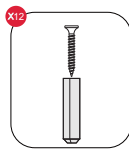
Câble audio stéréo 3.5 mm vers RCA



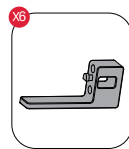
Câble 8 Broches pour Connexion au Soundbar (140 mm)



Télécommande



Kit de montage mural



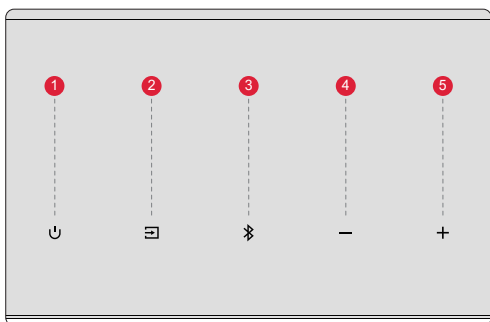
Support mural



Manuel de l'utilisateur

2 COMMANDES DE LA BARRE DE SON

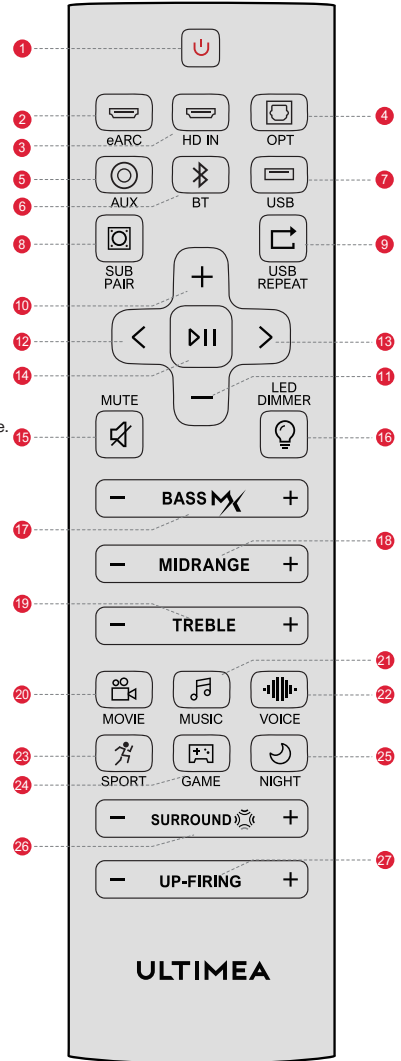
Panneau de contrôle



- 1 "⏻": Bouton d'alimentation**
Appuyez sur le bouton d'alimentation pour allumer/éteindre
- 2 "📺": Mode d'entrée**
Appuyez sur cette touche pour changer de chaîne : eARC-HD 1 (HDMI IN1)-HD 2(HDMI IN2)-OPT(OPTIQUE)-BT-AUX-USB.
- 3 "📶": BT**
Appuyez sur cette touche pour passer au canal BT et entrer en mode d'appairage. Maintenez-la enfoncée pendant 3 secondes pour déconnecter l'appareil actuel et vous connecter manuellement à un nouvel appareil sur votre téléphone portable / PC / TV. (BT ID: Nova S90).
- 4 "⏮": Réduction du volume**
- 5 "⏭": Augmenter le volume**

Télécommande

- 1 "⏻": **Bouton d'alimentation** Appuyez pour allumer/éteindre.
- 2 "eARC": **eARC** Appuyez pour basculer vers le canal HDMI eARC.
- 3 "HD IN": **HD IN** Appuyez pour basculer vers le canal HDMI IN.
- 4 "OPT": **OPT** Appuyez pour basculer vers le canal OPTIQUE.
- 5 "AUX": **AUX** Appuyez pour basculer vers le canal AUX.
- 6 "BT": **BT** Mode USB : Appuyez pour basculer vers le canal BLUETOOTH.
- 7 "USB": **USB** Appuyez pour basculer vers le canal USB.
- 8 "SUB PAIR":
Appuyez et maintenez le bouton enfoncé pendant 3 secondes pour mettre la barre de son en mode d'appariement avec le caisson de basses.
- 9 "USB REPEAT":
Mode USB : Appuyez pour basculer entre la lecture en boucle simple et la lecture en boucle de liste.
- 10 "+": **Augmentation du volume**
- 11 "-": **Réduction du volume**
- 12 "<": **Précédent** Uniquement pour les modes BT et USB : Passer à la piste précédente.
- 13 ">": **Suivant** Uniquement pour les modes BT et USB : Passer à la piste suivante.
- 14 "⏸": **Lecture / Pause** Uniquement pour les modes BT et USB.
- 15 "🔇": **MUTE**
- 16 "💡": **Atténuateur LED**
Appuyez pour ajuster la luminosité de l'écran d'affichage.
- 17 "BASS MAX": **BASSMAX**
Appuyez pour ajuster le niveau des basses, l'affichage indiquera: "B5-6", "B5-5", "B5-4", "B5-3", "B5-2", "B5-1", "B5 0", "B5 1", "B5 2", "B5 3", "B5 4", "B5 5", "B5 6".
- 18 "MIDRANGE": **MIDRANGE**
Appuyez pour ajuster le niveau des médiums, l'affichage indiquera: "MR-6", "MR-5", "MR-4", "MR-3", "MR-2", "MR-1", "MR 0", "MR 1", "MR 2", "MR 3", "MR 4", "MR 5", "MR 6".
- 19 "TREBLE": **TREBLE**
Appuyez pour ajuster le niveau des aigus, l'affichage indiquera: "TB-6", "TB-5", "TB-4", "TB-3", "TB-2", "TB-1", "TB 0", "TB 1", "TB 2", "TB 3", "TB 4", "TB 5", "TB 6".
- 20 "🎬": **FILM**
Appuyez pour basculer en mode MOVIE, l'affichage indiquera: "MOVIE".
- 21 "🎵": **MUSIQUE**
Appuyez pour basculer en mode MUSIC, l'affichage indiquera: "MUSIC".
- 22 "🎤": **VOIX**
Appuyez pour basculer en mode VOICE, l'affichage indiquera: "VOICE".
- 23 "🏃": **SPORT**
Appuyez pour basculer en mode SPORT, l'affichage indiquera: "SPORT".
- 24 "🎮": **JEU**
Appuyez pour basculer en mode GAME, l'affichage indiquera: "GAME".
- 25 "🌙": **NUIT**
Appuyez pour basculer en mode NIGHT, l'affichage indiquera: "NIGHT".
- 26 "SURROUND": **ENVIRONNEMENT**
Appuyez pour ajuster le niveau du son surround, l'affichage indiquera: "SR-6", "SR-5", "SR-4", "SR-3", "SR-2", "SR-1", "SR 0", "SR 1", "SR 2", "SR 3", "SR 4", "SR 5", "SR 6".
- 27 "UP-FIRING": **UP-FIRING**
Appuyez pour régler le niveau de volume des haut-parleurs de projection vers le haut, l'affichage affichera: "UP-3", "UP-2", "UP-1", "UP 0", "UP 1", "UP 2", "UP 3".

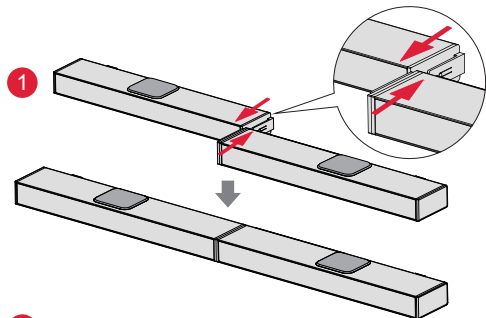


3 INSTALLATION DU SOUNDBAR

Étapes d'assemblage

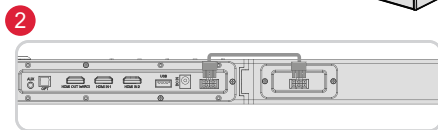
Étape 1

Placez les deux parties du soundbar au même niveau et alignez les joints de connexion. Connectez les deux parties en les poussant parallèlement pour les assembler en une seule pièce.



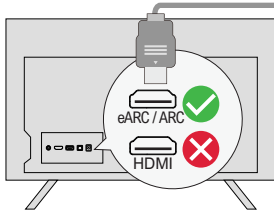
Étape 2

Brancher le câble à 8 broches.



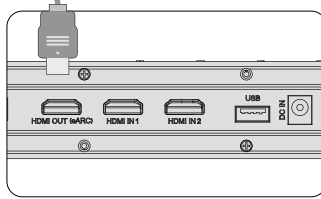
4 CONNECTER AU TÉLÉVISEUR VIA HDMI OUT eARC / ARC

FR



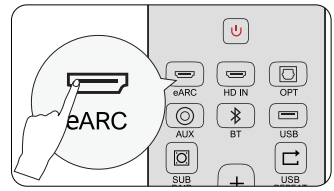
Étape 1 :

Branchez une extrémité du câble HDMI sur le port eARC / ARC à l'arrière de votre téléviseur.



Étape 2 :

Ensuite, connectez l'autre extrémité au port HDMI (eARC) du soundbar.



Étape 3 :

Appuyez sur le bouton eARC de la télécommande pour sélectionner l'entrée HDMI OUT (eARC).

Note :

Assurez-vous que le HDMI de votre téléviseur prend en charge l'eARC, sinon le signal audio Dolby Atmos ne peut pas être transmis.

Atmos : Si vous regardez un film au format Dolby Atmos, veuillez régler la sortie audio de votre téléviseur sur Pass Through :

Paramètres TV > Accueil > Paramètres > Son > Sortie audio numérique > Pass Through

DTS : Si vous regardez un film au format DTS, veuillez régler la sortie audio de votre téléviseur sur PCM :

Paramètres TV > Accueil > Paramètres > Son > Sortie audio numérique > PCM

Quelle est la différence entre HDMI IN, HDMI ARC et HDMI eARC ?

HDMI IN est une entrée HDMI standard qui vous permet de connecter des appareils à votre téléviseur ou à votre système audio. Il prend en charge les signaux audio et vidéo, mais ne prend pas en charge la fonctionnalité de canal de retour audio (ARC) ou de canal de retour audio amélioré (eARC).

HDMI ARC est un port HDMI spécial qui prend en charge la communication bidirectionnelle entre votre téléviseur et votre système audio. Cela signifie que l'audio peut être envoyé de votre téléviseur à votre système audio, et le système audio peut renvoyer l'audio à votre téléviseur.

HDMI eARC (Enhanced Audio Return Channel) est une version améliorée de HDMI ARC qui prend en charge des formats audio de meilleure qualité tels que Dolby Atmos et DTS:X.

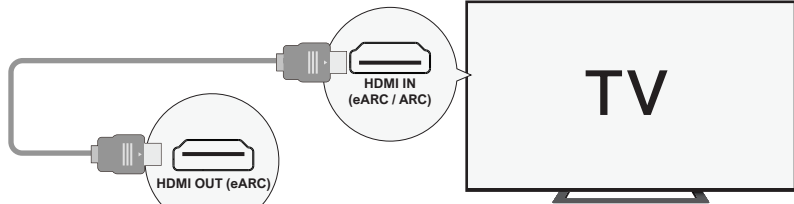
Note : Veuillez activer la fonction "CEC" sur votre téléviseur.

Lorsque l'eARC / l'ARC est connecté, la télécommande de votre téléviseur peut contrôler simultanément le soundbar et le téléviseur :

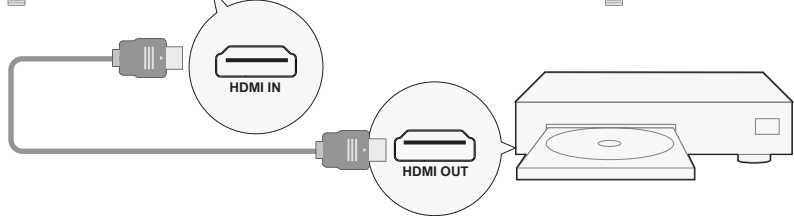
- 1 Allumer / éteindre
- 2 Régler le volume

5 CONNECTER A UN AUTRE APPAREIL VIA HDMI IN1 / HDMI IN2

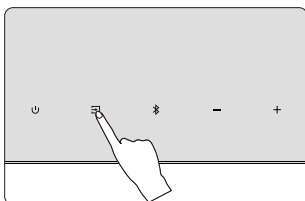
Étape 1



Étape 2



Étape 3



Étape 1 : Connectez le câble HDMI au port HDMI OUT (eARC) du Soundbar et l'autre extrémité au port eARC / ARC du téléviseur.

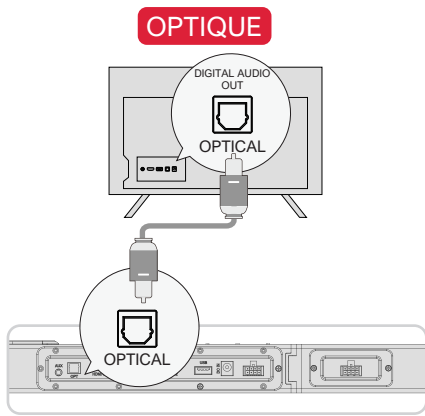
Étape 2 : Connectez le câble HDMI au port HDMI OUT de l'autre appareil (tel qu'un DVD ou une console de jeu) et l'autre extrémité au port HDMI IN1 / HDMI IN2 de la barre de son.

Étape 3 : Appuyez sur le bouton "S" de la barre de son ou de la télécommande pour passer au canal HDMI IN1 / HDMI IN2.

Remarque : Le HDMI de votre TV doit prendre en charge l'eARC pour transmettre le format audio Dolby Atmos à votre Soundbar.

6 CONNECTER AU TÉLÉVISEUR VIA OPTIQUE / AUX

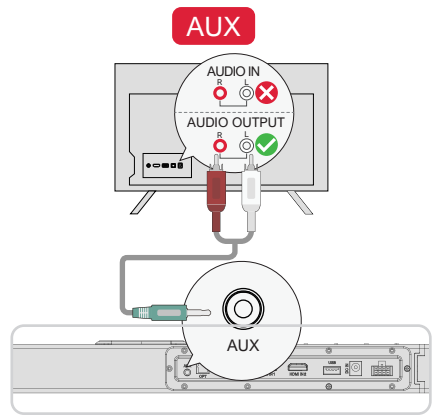
FR



OPTION 1 : OPTIQUE

- 1 Assurez-vous que le câble est connecté au port OPTICAL OUT de votre téléviseur et l'autre extrémité au port OPTICAL de la barre de son.
- 2 Assurez-vous que la prise optique est insérée correctement, comme indiqué sur l'image. N'insérez pas la fiche à l'envers et ne cassez pas le câble optique.

Remarque : Si le son est diffusé par les haut-parleurs internes du téléviseur, coupez ou réduisez le volume du téléviseur.



OPTION 2: AUX

- 1 Connectez le câble audio 3.5 mm vers RCA au port RCA AUDIO OUT de votre téléviseur.
- 2 Assurez-vous que la couleur des extrémités du câble correspond à la couleur des ports du téléviseur.

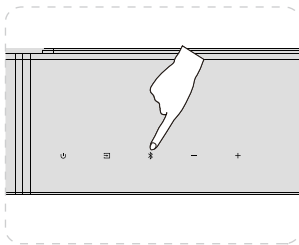
Remarque : N'oubliez pas de débrancher le câble AUX de la télévision et de la barre de son lorsque vous souhaitez changer de mode.

En mode optique : S'il n'y a pas de son, essayez de régler la sortie audio du téléviseur sur PCM :
Réglages TV > Accueil > Réglages > Son > Sortie audio numérique > PCM

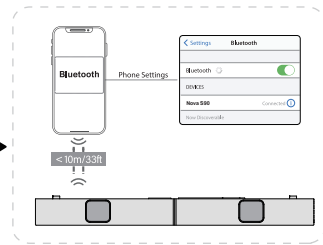
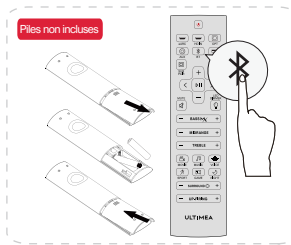
7 CONNECTER À BLUETOOTH

- 1 Appuyez sur le bouton "Bluetooth" de la barre de son ou de la télécommande pour entrer en mode d'appairage Bluetooth.
- 2 Ouvrez les paramètres Bluetooth de votre téléphone, recherchez et sélectionnez "Nova S90" pour connecter la barre de son.

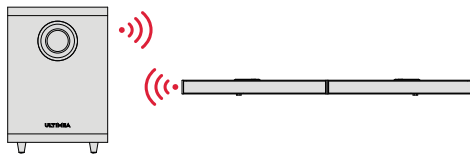
Remarque : Si l'appareil est déjà en mode Bluetooth et connecté, appuyez sur le bouton "Bluetooth" et maintenez-le enfoncé pendant 3 secondes pour déconnecter l'appareil actuel et vous connecter manuellement à un nouvel appareil sur votre téléphone portable / PC / TV.



OU



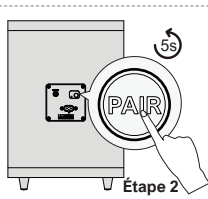
8 APPAIRAGE DU CAISSON DE BASSE



Le caisson de basse a été apparié à l'usine de la barre de son.
Cependant, il peut être nécessaire de l'appairer à nouveau si aucun son ne provient du caisson de basse.



Étape 1



Étape 2

Étape 1

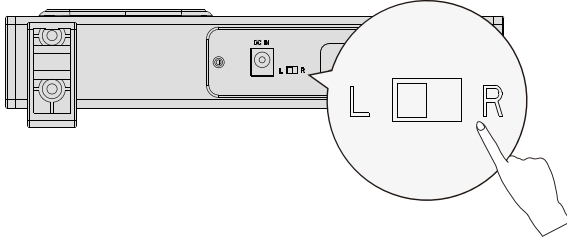
Appuyez sur le bouton "SUB PAIR" de la télécommande et maintenez-le enfoncé pendant 3 secondes, jusqu'à ce que la barre de son affiche "SUB" en clignotant à l'avant.

Étape 2

Appuyez sur le bouton "PAIR" du caisson de basses et maintenez-le enfoncé pendant 5 secondes, jusqu'à ce que le voyant LED blanc clignote. Le caisson de basse est jumelé avec succès lorsque le voyant LED blanc s'allume en continu.

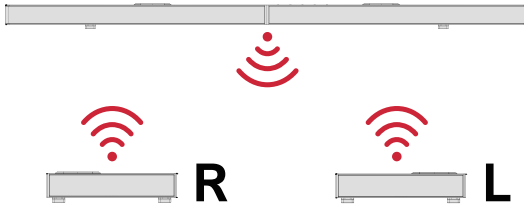
Remarque : L'interface "SUB OUT" sur le caisson de basses est un port réservé. Si vous recherchez une expérience améliorée des basses, vous pouvez acheter un caisson de basses actif supplémentaire de manière indépendante et le connecter à cette interface pour mettre à niveau votre système de basses et obtenir l'effet de basses optimal que vous désirez.

9 APPAIRAGE DES ENCEINTES SURROUND

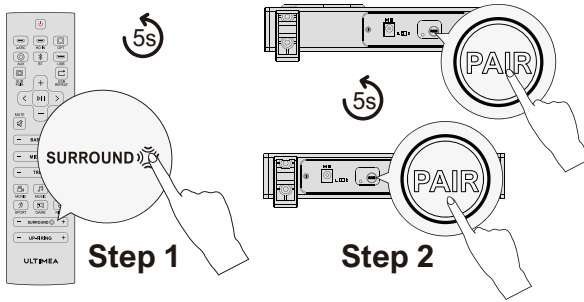


Pour une meilleure écoute, avant de procéder à l'appairage, assurez-vous que les boutons situés à l'arrière des enceintes surround sont placés l'un sur "L" et l'autre sur "R".

FR



Les enceintes surround ont été appariées à la barre de son en usine. Cependant, vous devrez peut-être les appairer à nouveau si aucun son ne provient des haut-parleurs surround.



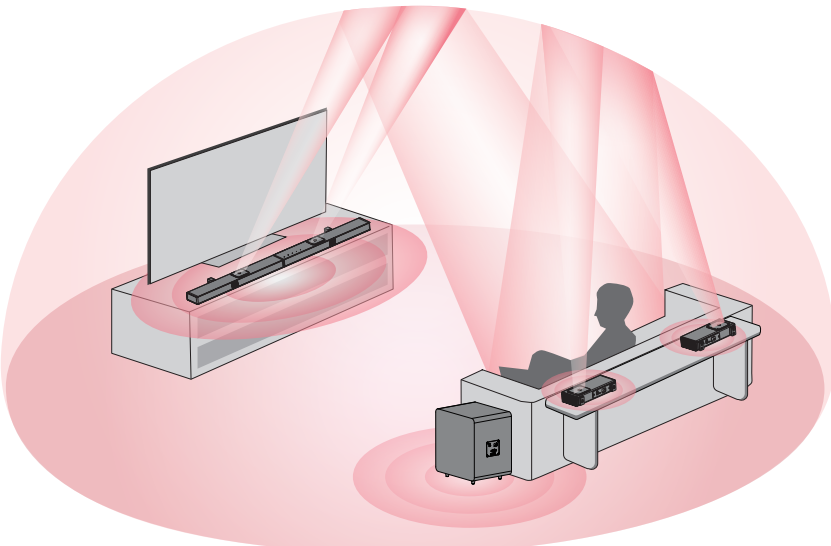
Étape 1

Appuyez sur le bouton "SURROUND" de la télécommande et maintenez-le enfoncé pendant 5 secondes, jusqu'à ce que la barre de son affiche "SUR" en clignotant à l'avant.

Étape 2

Appuyez sur la touche "PAIR" des enceintes surround et maintenez-la enfoncée pendant 5 secondes, jusqu'à ce que le voyant LED blanc clignote. L'enceinte surround est jumelée avec succès lorsque le voyant LED blanc s'allume en continu.

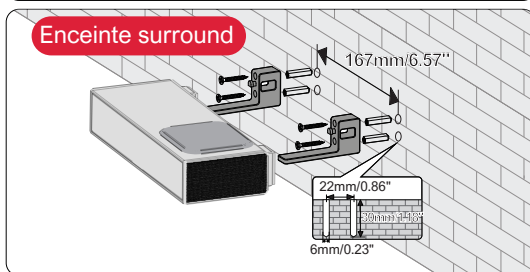
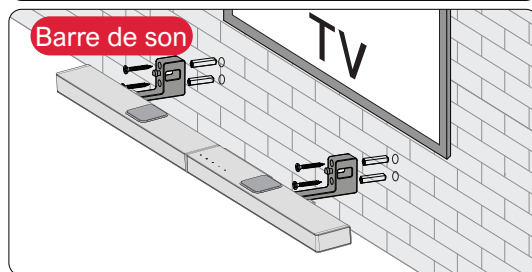
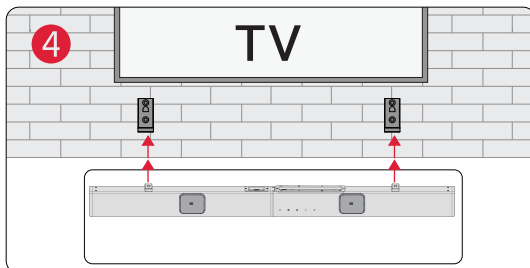
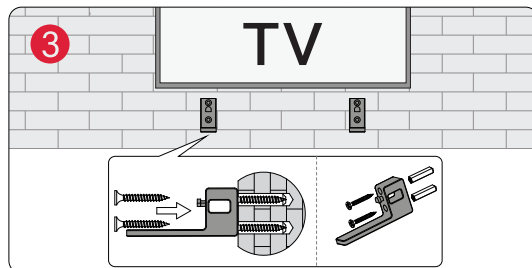
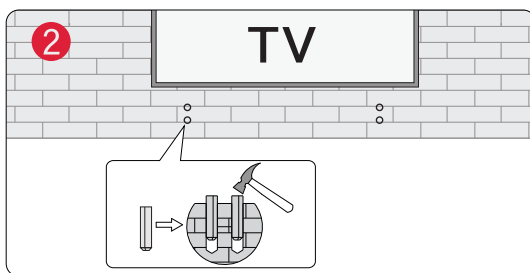
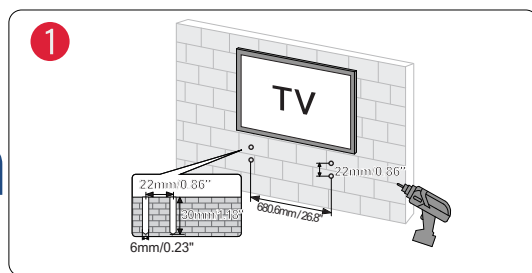
10 OPTIONS DE PLACEMENT



La barre de son et les enceintes surround doivent être placées à hauteur d'oreille ou presque.

11 INSTALLATION DU SUPPORT MURAL

FR



Remarque : Veuillez utiliser l'adaptateur HDMI pour faciliter le branchement et le débranchement du câble HDMI.

12 SPÉCIFICATIONS

Numéro de modèle	U4420
Alimentation	AC 100-240V, ~50/60Hz
Haut-parleurs de la barre de son	(3.1" x 1.2") x 5 (Haut-parleur de la barre de son) + 1.8" x 4 (Haut-parleurs orientés vers le haut) + (3.1" x 1.2") x 2 (Enceinte surround) + 8" (Caisson de basse)
Réponse en fréquence	35Hz - 18kHz
Puissance en veille	<0.5W
Température de fonctionnement	0°C - 45°C / 32°F - 113°F
Vision Bluetooth	5.3

Dimensions et poids		
Barre de son	1008 (W) x 38 (H) x 76 (D)mm	39.7" x 1.5" x 3.0"
Caisson de basse	308 (W) x 345 (H) x 237 (D)mm	12.1" x 13.6" x 9.3"
Enceinte surround	205 (W) x 38 (H) x 76 (D)mm	8.1" x 1.5" x 3.0"
Emballage	550 (W) x 314 (H) x 428 (D)mm	21.7" x 12.4" x 16.9"
Poids net	10kg / 22.05bs	
Poids brut	12.6kg / 27.78lbs	

ULTIMEA

Nova S90

Manuale d'uso



Modello n.: U4420

SIAMO PRONTI AD AIUTARE



support@ultimea.com

IT

Preferite un video tutorial?

Video guida all'installazione o MANUALE D'USO sul sito web di ULTIMEA.



@ultimea_official



support.ultimea.com

+1 888-598-8875 (US) Mon-Fri 9am-5pm (PST)
+49 89-628-25828 (EU) Mon-Fri 9am-5pm (CET)

1 ELENCO DEGLI ACCESSORI



Subwoofer

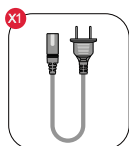


Barra audio

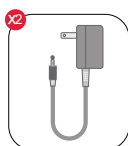
Altoparlante surround x 2



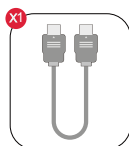
Adattatore di alimentazione della barra audio



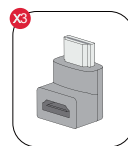
Cavo di alimentazione del subwoofer



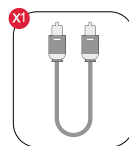
Adattatore di alimentazione dell'altoparlante surround



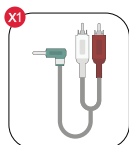
Cavo HDMI



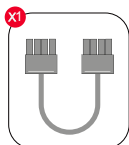
Adattatore HDMI



Cavo ottico digitale



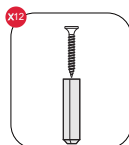
Cavo audio stereo da 3.5 mm a RCA



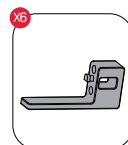
Cavo a 8 pin per il collegamento della Soundbar (140 mm)



Telecomando



Kit di montaggio a parete

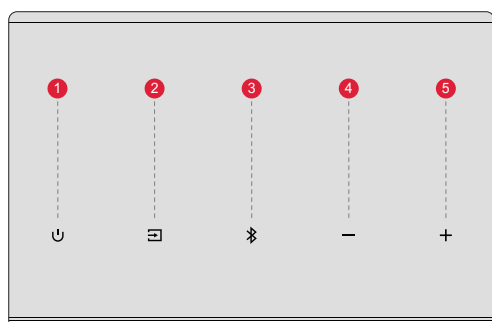


Staffa a parete



Manuale d'uso

2 CONTROLLI DELLA SOUNDBAR

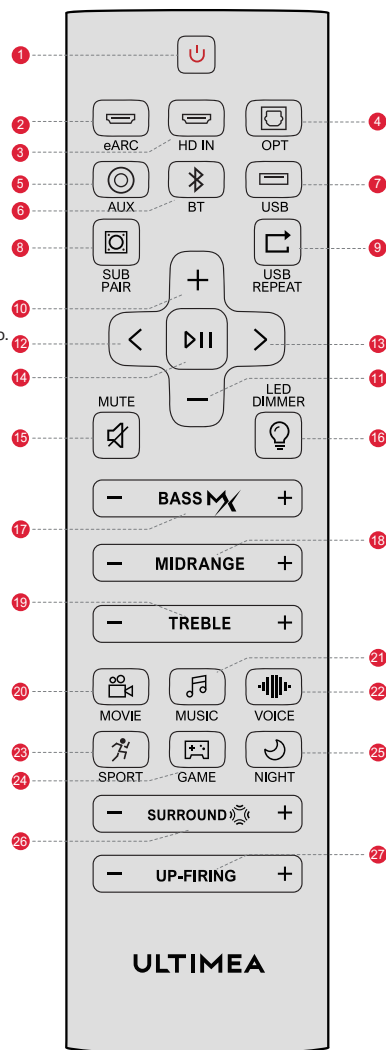


Pannello di controllo

- 1** "⏻": **Pulsante di accensione**
Premere il pulsante di accensione per accendere/ spegnere.
- 2** "📺": **Modalità di ingresso**
Premere per cambiare canale: eARC-HD 1(HDMI IN1)-HD 2(HDMI IN2) -OPT(OTTICO)-BT-AUX-USB.
- 3** "📶": **BT**
Premere per passare al canale BT / Tenere premuto per 3 secondi per scollegare il dispositivo corrente e collegarsi a un nuovo dispositivo. (BT ID: Nova S90).
- 4** "⏮": **Volume giù**
- 5** "⏭": **Volume su**

Telecomando

- 1 "U": **Pulsante di Accensione** Premere per accendere/spegnere il dispositivo.
- 2 "eARC": **eARC** Premere per passare al canale HDMI eARC.
- 3 "HD IN": **HD IN** Premere per passare al canale HDMI IN.
- 4 "OPT": **OPT** Premere per passare al canale OTTICO.
- 5 "AUX": **AUX** Premere per passare al canale AUX.
- 6 "BT": **BT** Modalità USB: Premere per passare al canale BLUETOOTH.
- 7 "USB": **USB** Premere per passare al canale USB.
- 8 "SUB PAIR": **SUB PAIR**
Tenere premuto il pulsante per 3 secondi per mettere la Soundbar in uno stato pronto per l'accoppiamento con il subwoofer.
- 9 "RIPETIZIONE USB": **RIPETIZIONE USB**
Modalità USB: Premere per passare dalla riproduzione di un singolo loop a quella di un elenco.
- 10 "+": **Volume Su**
- 11 "-": **Volume Giù**
- 12 "<": **Precedente** Solo per la modalità BT e USB: Passa alla traccia precedente.
- 13 ">": **Successivo** Solo per la modalità BT e USB: Passa al brano successivo.
- 14 "||": **Riproduzione / Pausa** Solo per la modalità BT e USB.
- 15 "MUTE": **MUTE**
- 16 "LED DIMMER": **DIMMER A LED** Premere per regolare la luminosità dello schermo.
- 17 "BASS MAX": **BASSMAX**
Premere per regolare il livello dei bassi; il display visualizza:
"BS-6", "BS-5", "BS-4", "BS-3", "BS-2", "BS-1", "BS 0", "BS 1", "BS 2", "BS 3",
"BS 4", "BS 5", "BS 6".
- 18 "MIDRANGE": **MIDRANGE**
Premere per regolare il livello dei contralti; il display visualizza:
"MR-6", "MR-5", "MR-4", "MR-3", "MR-2", "MR-1", "MR 0", "MR 1", "MR 2", "MR 3",
"MR 4", "MR 5", "MR 6".
- 19 "TREBLE": **TREBLE**
Premere per regolare il livello degli acuti; il display visualizza:
"TB-6", "TB-5", "TB-4", "TB-3", "TB-2", "TB-1", "TB 0", "TB 1",
"TB 2", "TB 3", "TB 4", "TB 5", "TB 6".
- 20 "MOVIE": **MOVIE**
Premere per passare alla modalità MOVIE; il display visualizza: "MOVI".
- 21 "MUSIC": **MUSIC**
Premere per passare al modo MUSIC, il display visualizza: "MUSC".
- 22 "VOICE": **VOICE**
Premere per passare alla modalità VOICE, il display visualizza: "VOIC".
- 23 "SPORT": **SPORT**
Premere per passare alla modalità SPORT, il display visualizza: "SPRT".
- 24 "GAME": **GAME**
Premere per passare alla modalità GAME, il display visualizza: "GAME".
- 25 "NIGHT": **NOTTE**
Premere per passare alla modalità NIGHT, il display visualizza: "NIGT".
- 26 "SURROUND": **SURROUND**
Premere per regolare il livello del suono surround, il display visualizza:
"SR-6", "SR-5", "SR-4", "SR-3", "SR-2", "SR-1", "SR 0", "SR 1", "SR 2", "SR 3", "SR 4", "SR 5", "SR 6".
- 27 "UP-FIRING": **UP-FIRING**
Premere per regolare il livello del volume dei diffusori diretti verso l'alto, sul display verrà visualizzato:
"UP-3", "UP-2", "UP-1", "UP 0", "UP 1", "UP 2", "UP 3".

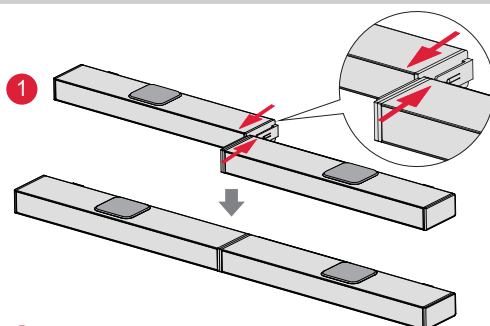


3 INSTALLAZIONE DELLA SOUNDBAR

Fasi di montaggio

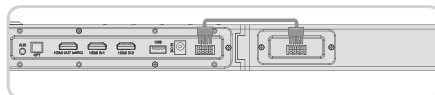
Passo 1

Posizionare le due parti della Soundbar sullo stesso livello e allineare i giunti di collegamento. Collegare le due parti spingendole parallelamente per unirle in un unico pezzo.

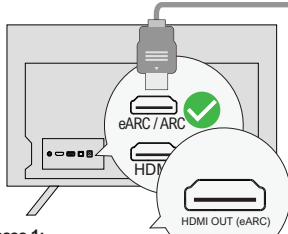


Passo 2

Inserire il cavo a 8 pin.

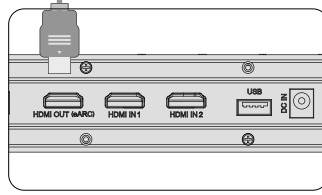


4 COLLEGAMENTO AL TV TRAMITE USCITA HDMI eARC / ARC



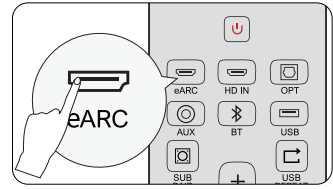
Passo 1:

Collegare un'estremità del cavo HDMI alla porta eARC / ARC sul retro del televisore.



Passo 2:

Collegare quindi l'altra estremità alla porta HDMI (eARC) della soundbar.



Passo 3:

Premere il tasto "eARC" del telecomando per selezionare l'ingresso "HDMI OUT (eARC)".

Nota:

Assicurarsi che l'HDMI del televisore supporti eARC, altrimenti il segnale audio Dolby Atmos non può essere trasmesso.

Atmos: se si guarda un film in formato Dolby Atmos, impostare l'uscita audio del televisore su Pass Through:

Impostazioni TV > Home > Impostazioni > Suono > Uscita audio digitale > Passa attraverso

DTS: Se si sta guardando un film in formato DTS, impostare l'uscita audio sul televisore su PCM:

Impostazioni TV > Home > Impostazioni > Audio > Uscita audio digitale > PCM

Qual è la differenza tra: HDMI IN, HDMI ARC, HDMI eARC?

HDMI IN è un ingresso HDMI standard che consente di collegare i dispositivi al televisore o al sistema audio. Supporta segnali audio e video, ma non supporta la funzionalità ARC (Audio Return Channel) o eARC (Enhanced Audio Return Channel).

HDMI ARC è una porta HDMI speciale che consente la comunicazione bidirezionale tra il televisore e il sistema audio. Ciò significa che l'audio può essere inviato dal televisore al sistema audio e il sistema audio può inviare l'audio al televisore.

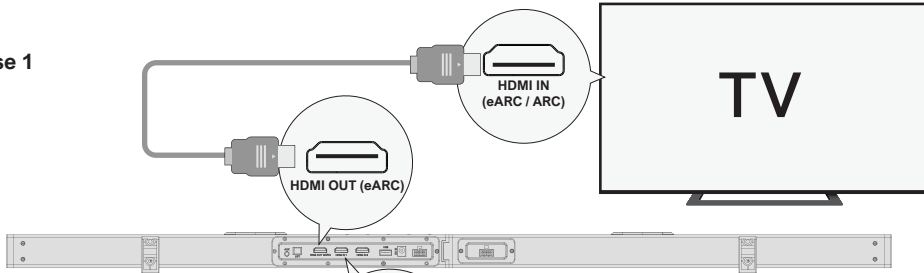
HDMI eARC (Enhanced Audio Return Channel) è una versione aggiornata dell'HDMI ARC che supporta formati audio di qualità superiore come Dolby Atmos e DTS:X.

Nota: attivare la funzione "CEC" sul televisore.

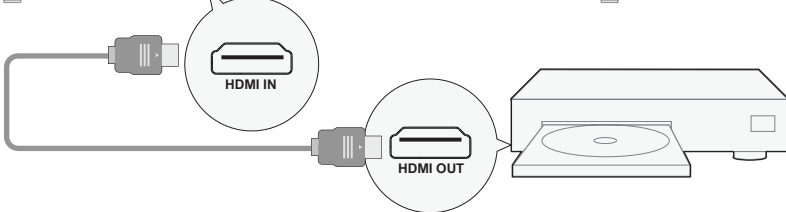
Quando è collegato eARC / ARC, il telecomando del televisore può controllare contemporaneamente la soundbar e il televisore : ① Accendere / Spegnere ② Regolare il volume

5 COLLEGAMENTO AD ALTRI DISPOSITIVI TRAMITE HDMI IN1 / HDMI IN2

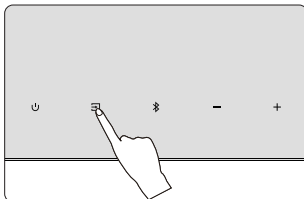
Fase 1



Fase 2



Fase 3



Fase 1: Collegare il cavo HDMI alla porta HDMI OUT (eARC) della Soundbar e l'altra estremità alla porta eARC / ARC del televisore.

Fase 2: collegare il cavo HDMI alla porta HDMI OUT dell'altro dispositivo (ad esempio un DVD o una console per videogiochi) e l'altra estremità alla porta HDMI IN1 / HDMI IN2 della Soundbar.

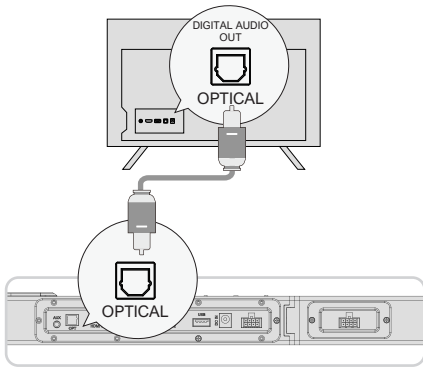
Fase 3: Premere il pulsante " " sulla Soundbar o sul telecomando per passare al canale HDMI IN1 / HDMI IN2.

Nota: Il TVHDMI deve supportare eARC per trasmettere il formato audio Dolby ATMOS alla Soundbar.

6 COLLEGAMENTO ALLA TV VIA OTTICO/AUX

IT

OTTICO

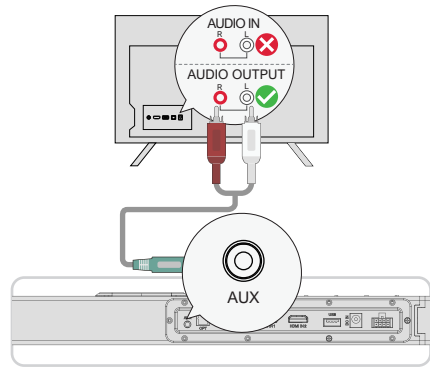


OPZIONE 1: OTTICO

- 1 Assicurarsi che il cavo sia collegato alla porta OPTICAL OUT del televisore e l'altra estremità alla porta OPTICAL del sistema Soundbar.
- 2 Assicurarsi che la spina ottica sia inserita correttamente come mostrato nell'immagine. Non inserire la spina al contrario e non rompere l'ottica.

Nota: Se l'audio viene riprodotto dagli altoparlanti interni del televisore, disattivare o ridurre al minimo il volume del televisore.

AUX



OPZIONE 2: AUX

- 1 Collegare il cavo audio da 3.5 mm a RCA alla porta RCA AUDIO OUT del televisore.
- 2 Assicurarsi che il colore delle estremità dei cavi corrisponda a quello delle porte del televisore.

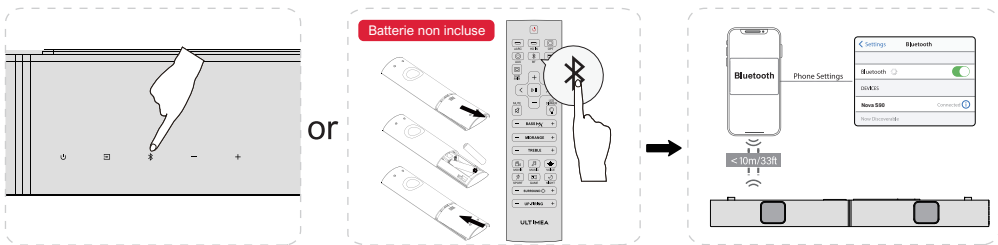
Nota: Ricordarsi di scollegare il cavo AUX dal televisore e dalla Soundbar quando si desidera cambiare modalità.

In modalità ottica: Se non si sente alcun suono, provare a impostare l'uscita audio del televisore su PCM:
Impostazioni TV > Home > Impostazioni > Audio > Uscita audio digitale > PCM

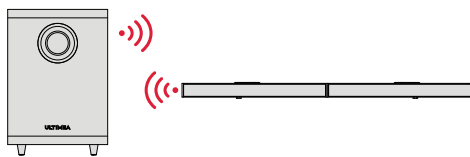
7 CONNETTERSI AL BLUETOOTH

- 1 Premere il pulsante "Bluetooth" sulla soundbar o sul telecomando per accedere alla modalità di accoppiamento Bluetooth.
- 2 Aprire le impostazioni Bluetooth del telefono, trovare e selezionare "Nova S90" per collegare la soundbar.

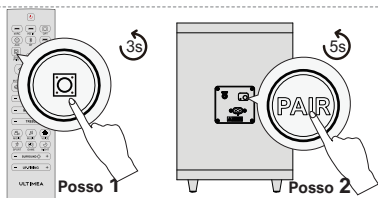
Nota: se è già in modalità Bluetooth e collegato, tenere premuto il pulsante "Bluetooth" per 3 secondi per scollegare il dispositivo corrente e collegarsi manualmente a un nuovo dispositivo sul telefono cellulare / PC / TV.



8 ACCOPPIAMENTO DEL SUBWOOFER



Il subwoofer è stato accoppiato alla soundbar di fabbrica.
Tuttavia, potrebbe essere necessario accoppiarlo nuovamente se il subwoofer non emette alcun suono.



Passo 1

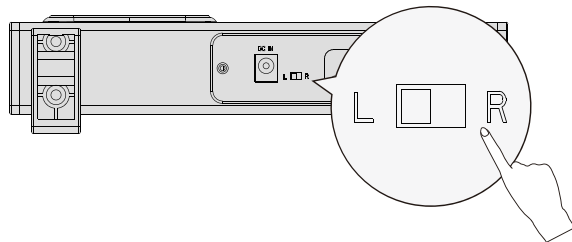
Tenere premuto il pulsante "SUB PAIR" sul telecomando per 3 secondi, finché la soundbar non mostra "SUB" lampeggiante nella parte anteriore.

Passo 2

Tenere premuto il pulsante "PAIR" sul subwoofer per 5 secondi, finché la spia LED bianca non lampeggia. Il subwoofer è accoppiato correttamente quando la spia LED bianca è accesa fissa.

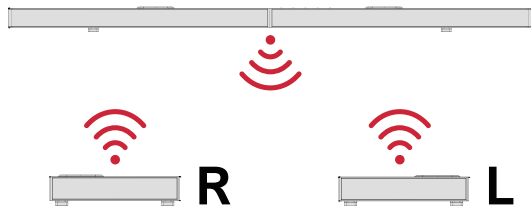
Nota: L'interfaccia 'SUB OUT' sul subwoofer è una porta riservata. Se desideri un'esperienza dei bassi migliorata, puoi acquistare un subwoofer attivo aggiuntivo in modo indipendente e collegarlo a questa interfaccia per potenziare il tuo sistema dei bassi, ottenendo l'effetto basso ottimale desiderato.

9 ACCOPPIAMENTO DEI DIFFUSORI SURROUND



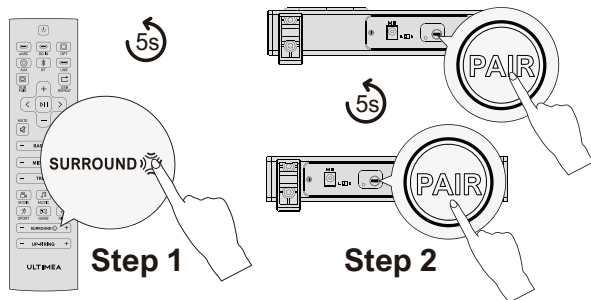
Per una migliore esperienza di ascolto, prima di procedere all'accoppiamento, accertarsi che i pulsanti sul retro dei diffusori surround siano commutati uno su "L" e l'altro su "R".

IT



I diffusori surround sono stati accoppiati alla soundbar in fabbrica.

Tuttavia, potrebbe essere necessario effettuare un nuovo abbinamento se i diffusori surround non emettono alcun suono.



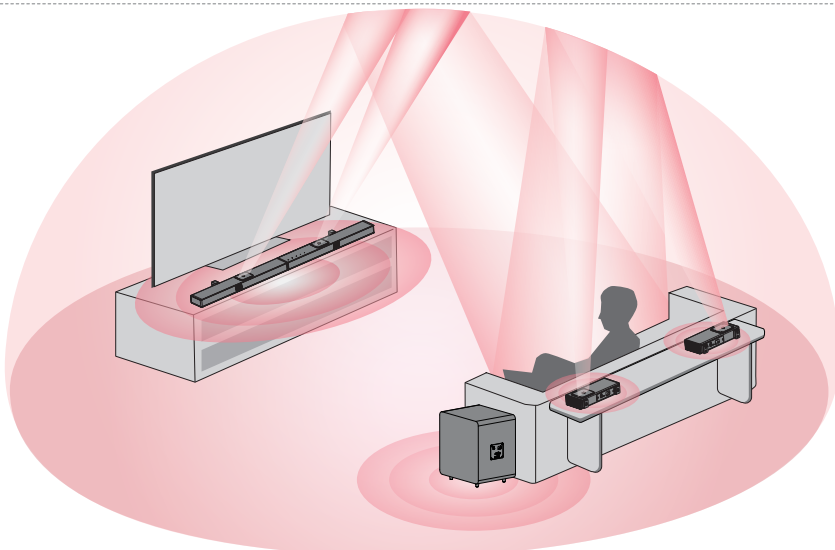
Passo 1

Tenere premuto il pulsante "SURROUND" sul telecomando per 5 secondi, finché la soundbar non mostra "SUR" lampeggiante nella parte anteriore.

Passo 2

Tenere premuto il pulsante "PAIR" sui diffusori surround per 5 secondi, finché la spia LED bianca non lampeggia. Il diffusore surround è accoppiato correttamente quando la spia LED bianca è accesa fissa.

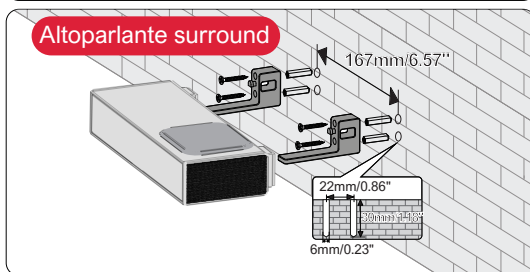
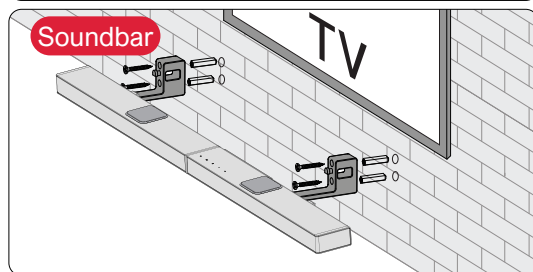
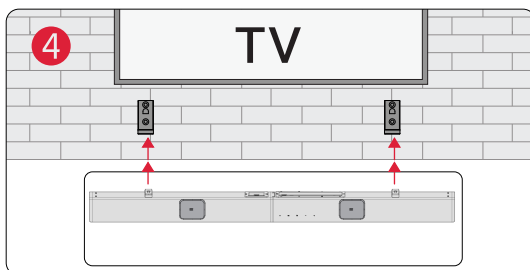
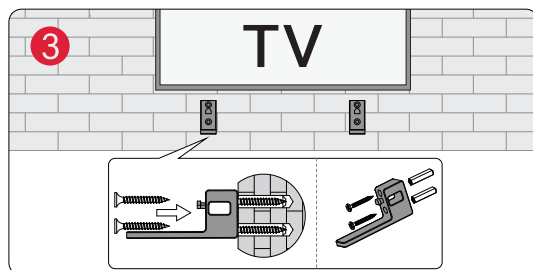
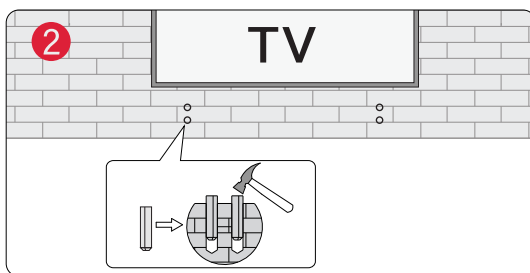
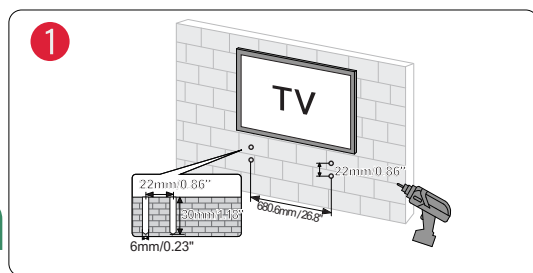
10 OPZIONI DI POSIZIONAMENTO



La soundbar e i diffusori surround devono essere posizionati all'altezza delle orecchie o quasi.

11 INSTALLAZIONE A PARETE

IT



Nota : Utilice el adaptador HDMI para enchufar y desenchufar fácilmente el cable HDMI.

12 SPECIFICHE

Numero di modello	U4420
Alimentazione	AC 100-240V, ~50/60Hz
Driver della Soundbar	(3.1" x 1.2")x 5 (Soundbar)+ 1.8" x 4 (driver con fuoco verso l'alto) + (3.1" x 1.2") x 2 (altoparlante della Surroundbar) + 8" (subwoofer)
Risposta in frequenza	35Hz - 18kHz
Potenza in standby	<0.5W
Temperatura di esercizio	0°C - 45°C / 32°F - 113°F
Visione Bluetooth	5.3

Dimensioni e peso	
Soundbar	1008 (W) x 38 (H) x 76 (D)mm 39.7" x 1.5" x 3.0"
Subwoofer	308 (W) x 345 (H) x 237 (D)mm 12.1" x 13.6" x 9.3"
Altoparlante surround	205 (W) x 38 (H) x 76 (D)mm 8.1" x 1.5" x 3.0"
Imballaggio	550 (W) x 314 (H) x 428 (D)mm 21.7" x 12.4" x 16.9"
Peso netto	10kg / 22.05lbs
Peso lordo	12.6kg / 27.78lbs

ULTIMEA

Nova S90

Manual del usuario



No de modelo: U4420

ESTAMOS LISTOS PARA AYUDAR



support@ultimea.com

¿Prefiere un tutorial en video?

Vídeo guía de instalación o MANUAL DE USUARIO en el sitio web de ULTIMEA.

@ultimea_oficial



support.ultimea.com

ES

+1 888-598-8875 (US) Mon-Fri 9am-5pm (PST)
+49 89-628-25828 (EU) Mon-Fri 9am-5pm (CET)

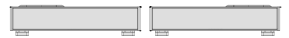
1 LISTA DE ACCESORIOS



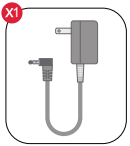
Subwoofer



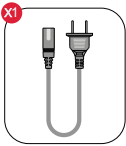
Barra de sonido



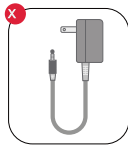
Altavoz surround x 2



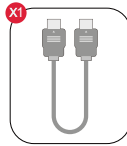
Adaptador de alimentación del barra de sonido



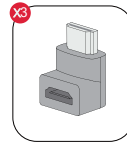
Cable de alimentación del subwoofer



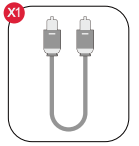
Adaptador de alimentación del altavoz surround



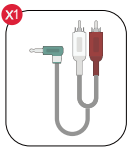
Cable HDMI



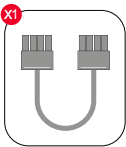
Adaptador HDMI



Cable óptico digital



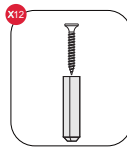
Cable de audio estéreo de 3.5 mm a RCA



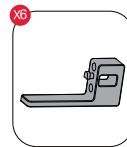
Cable de 8 clavijas para conexión de barra de sonido (140 mm)



Mando a distancia



Kit de montaje en pared

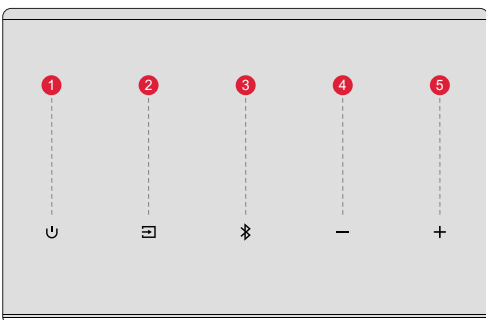


Soporte de pared



Manual del usuario

2 CONTROLES DE LA BARRA DE SONIDO

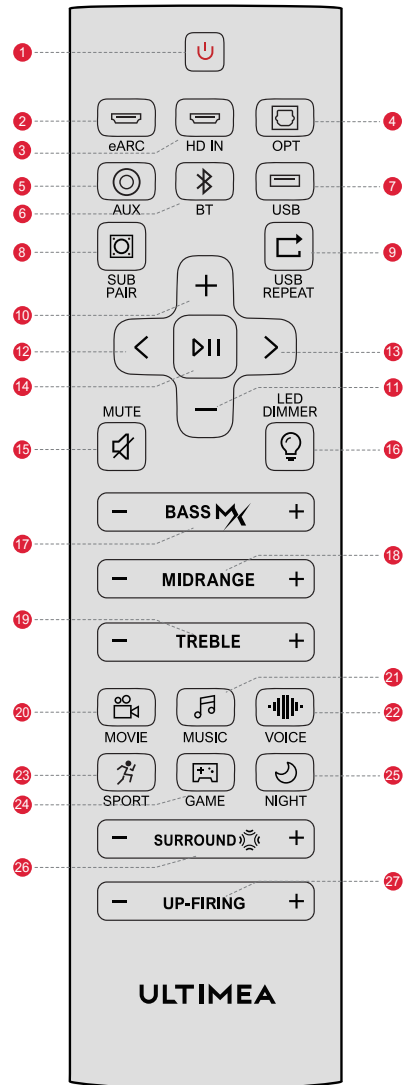


Panel de control

- 1 : **Botón de encendido**
Pulse el botón de encendido para encender/apagar.
- 2 : **Modo de entrada**
Pulse para cambiar de canal: eARC-HD 1(HDMI IN1)-HD 2(HDMI IN2) -OPT(ÓPTICO)-BT-AUX-USB.
- 3 : **BT**
Pulse para cambiar al canal BT / Mantenga pulsado durante 3 segundos para desconectar el dispositivo actual y conectarse a un nuevo dispositivo. (BT ID: Nova S90).
- 4 : **Bajar volumen**
- 5 : **Subir volumen**

Mando a Distancia

- 1 "⏻": **Botón de encendido** Pulse para encender / apagar.
- 2 "eARC": **eARC** Pulse aquí para cambiar al canal HDMI eARC.
- 3 "HD IN": **HD IN** Pulse aquí para cambiar al canal HDMI IN.
- 4 "OPT": **OPT** Pulse aquí para cambiar al canal OPTICAL.
- 5 "AUX": **AUX** Pulse para cambiar al canal AUX.
- 6 "BT": **BT** Modo USB: Pulse para cambiar al canal BLUETOOTH.
- 7 "USB": **USB** Pulse para cambiar al canal USB.
- 8 "SUB PAIR":
Mantenga pulsado el botón durante 3 segundos para poner la barra de sonido en un estado listo para emparejarse con el subwoofer.
- 9 "USB REPETIR": **USB REPETIR**
Modo USB: Pulse este botón para cambiar entre reproducción en bucle simple y reproducción en bucle de lista.
- 10 "+": **Subir volumen**
- 11 "-": **Bajar volumen**
- 12 "<": **Anterior** Sólo para los modos BT y USB: Salta a la pista anterior.
- 13 ">": **Siguiente** Sólo para los modos BT y USB: Salta a la pista siguiente.
- 14 "⏮": **Reproducir / Pausa** Sólo para los modos BT y USB.
- 15 "🔇": **MUTE**
- 16 "💡": **ATENUADOR LED**
Pulse para ajustar el brillo de la pantalla en 5 niveles. Manténgalo pulsado durante 3 segundos para apagar la pantalla.
- 17 "BASS MAX": **BASSMAX**
Pulse para ajustar el nivel de graves, la pantalla mostrará:
"B5-6", "B5-5", "B5-4", "B5-3", "B5-2", "B5-1", "B5 0", "B5 1", "B5 2",
"B5 3", "B5 4", "B5 5", "B5 6".
- 18 "MIDRANGE": **MEDIOS**
Pulse para ajustar el nivel de agudos, la pantalla mostrará:
"MR-6", "MR-5", "MR-4", "MR-3", "MR-2", "MR-1", "MR 0", "MR 1", "MR 2",
"MR 3", "MR 4", "MR 5", "MR 6".
- 19 "TREBLE": **AGUDOS**
Pulse este botón para ajustar el nivel de agudos; la pantalla mostrará:
"TB-6", "TB-5", "TB-4", "TB-3", "TB-2", "TB-1", "TB 0", "TB 1",
"TB 2", "TB 3", "TB 4", "TB 5", "TB 6".
- 20 "🎬": **MOVIE**
Pulse para cambiar al modo MOVIE, la pantalla mostrará: "MOVIE".
- 21 "🎵": **MÚSICA**
Pulse para cambiar al modo MUSIC, la pantalla mostrará: "MUSIC".
- 22 "🔊": **VOZ**
Pulse para cambiar al modo VOICE, la pantalla mostrará: "VOICE".
- 23 "🏃": **SPORT**
Pulse para cambiar al modo SPORT, la pantalla mostrará: "SPRT".
- 24 "🎮": **JUEGO**
Pulse para cambiar al modo GAME, en la pantalla aparecerá: "GAME".
- 25 "🌙": **NOCHE**
Pulse para cambiar al modo NIGHT, la pantalla mostrará: "NIGT".
- 26 "SURROUND": **SURROUND**
Pulse este botón para ajustar el nivel de sonido surround:
"SR-6", "SR-5", "SR-4", "SR-3", "SR-2", "SR-1", "SR 0", "SR 1", "SR 2", "SR 3", "SR 4", "SR 5", "SR 6".
- 27 "UP-FIRING": **UP-FIRING**
Presione para ajustar el nivel de volumen de los altavoces de disparo hacia arriba, la pantalla mostrará:
"UP-3", "UP-2", "UP-1", "UP 0", "UP 1", "UP 2", "UP 3".

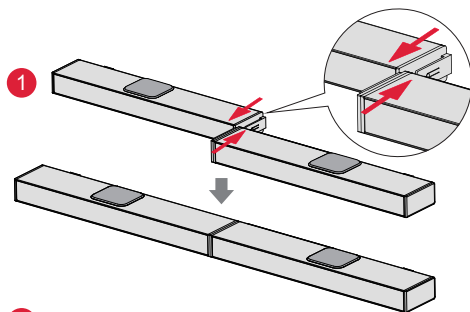


3 INSTALACIÓN DE LA BARRA DE SONIDO

Pasos de montaje

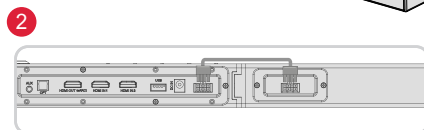
Paso 1

Coloque las dos partes de la barra de sonido al mismo nivel y alinee las juntas de conexión. Conecte las dos partes empujando paralelamente para combinarlas como una sola pieza.

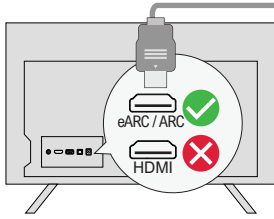


Paso 2

Enchufe el cable de 8 clavijas.

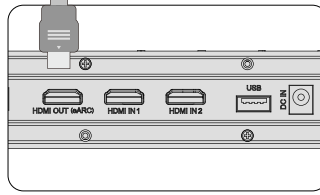


4 CONECTE AL TELEVISOR MEDIANTE SALIDA HDMI eARC / ARC



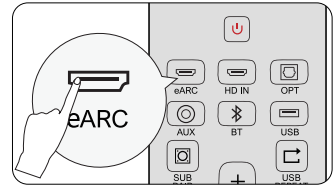
Paso 1:

Conecte un extremo del cable HDMI al puerto eARC / ARC de la parte posterior del televisor.



Paso 2:

A continuación, conecte el otro extremo al puerto HDMI (eARC) de la barra de sonido.



Paso 3:

Pulse el botón "eARC" del mando a distancia para seleccionar la entrada "HDMI OUT (eARC)".

Nota:

Asegúrese de que el HDMI de su televisor es compatible con eARC, de lo contrario no se podrá transmitir la señal de audio Dolby Atmos.

Atmos: Si está viendo una película en formato Dolby Atmos, ajuste la salida de audio del televisor en Pass Through:

Ajustes TV > Inicio > Ajustes > Sonido > Salida de audio digital > Pass Through.

DTS: Si está viendo una película en formato DTS, configure la salida de audio del televisor como PCM: .

Ajustes TV > Inicio > Ajustes > Sonido > Salida de audio digital > PCM

¿Cuál es la diferencia entre: HDMI IN, HDMI ARC, HDMI eARC?

HDMI IN es una entrada HDMI estándar que permite conectar dispositivos al televisor o al sistema de audio. Admite señales de audio y vídeo, pero no es compatible con las funciones de canal de retorno de audio (ARC) o canal de retorno de audio mejorado (eARC).

HDMI ARC es un puerto HDMI especial que permite la comunicación bidireccional entre el televisor y el sistema de audio. Esto significa que el audio puede enviarse desde el televisor al sistema de audio, y el sistema de audio puede devolver el audio al televisor.

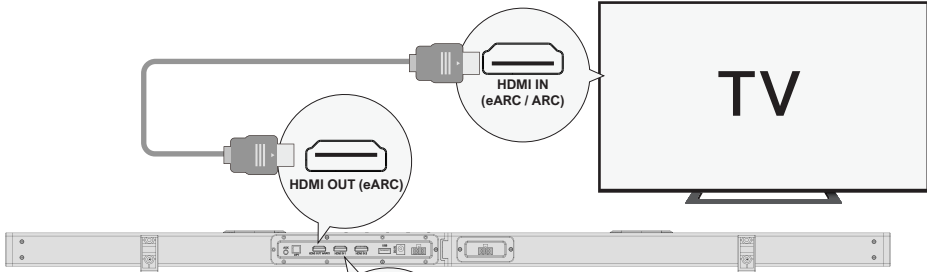
HDMI eARC (canal de retorno de audio mejorado) es una versión actualizada de HDMI ARC que admite formatos de audio de mayor calidad, como Dolby Atmos y DTS:X.

Nota: Active la función "CEC" en su televisor.

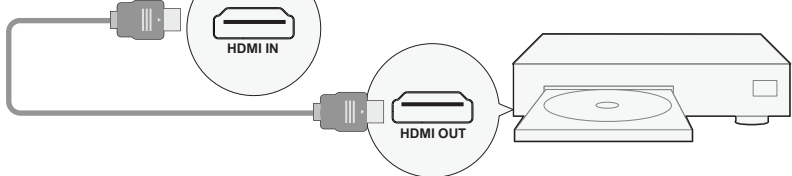
Cuando eARC / ARC está conectado, el mando a distancia del televisor puede controlar la barra de sonido y el televisor simultáneamente: **1** Encender / apagar **2** Ajustar el volumen

5 CONECTAR A OTRO DISPOSITIVO A TRAVÉS DE HDMI IN1 / HDMI IN2

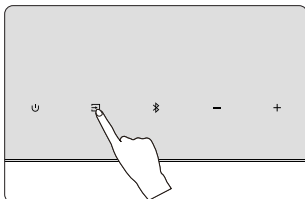
Paso 1



Paso 2



Paso 3



Paso 1: Conecte el cable HDMI al puerto HDMI OUT (eARC) de la barra de sonido y el otro extremo al puerto eARC / ARC del televisor.

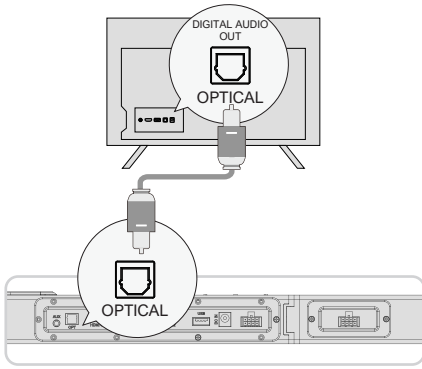
Paso 2: Conecte el cable HDMI al puerto HDMI OUT del otro dispositivo (como un DVD o una videoconsola) y el otro extremo al puerto HDMI IN1 / HDMI IN2 de la barra de sonido.

Paso 3: Pulse el botón " " en la barra de sonido o en el mando a distancia para cambiar al canal HDMI IN1 / HDMI IN2.

Nota: Su TV HDMI necesita soportar eARC para transmitir el formato de audio Dolby ATMOS a su Soundbar.

6 CONEXIÓN AL TELEVISOR VÍA ÓPTICA / AUX

ÓPTICA

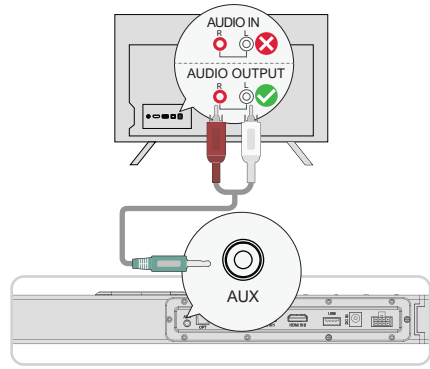


OPCIÓN 1: ÓPTICA

- 1 Asegúrese de que el cable está conectado al puerto OPTICAL OUT del televisor y el otro extremo al puerto OPTICAL de la barra de sonido.
- 2 Asegúrese de que el conector óptico está insertado correctamente como se muestra en la imagen. No inserte el enchufe al revés y rompa el conector óptico.

Nota: Si se reproduce audio por los altavoces internos del televisor, silencie o minimice el volumen del televisor.

AUX



OPCIÓN 2: AUX

- 1 Conecte el cable de audio de 3.5 mm a RCA para conectarlo al puerto RCA AUDIO OUT de su TV.
- 2 Asegúrese de que el color de los extremos de los cables coincide con el color de los puertos del televisor.

Nota: Recuerde desconectar el cable AUX del televisor y de la barra de sonido cuando desee cambiar de modo.

En modo óptico: Si no hay sonido, pruebe a ajustar la salida de audio del televisor a PCM:
Ajustes TV > Inicio > Ajustes > Sonido > Salida de audio digital > PCM

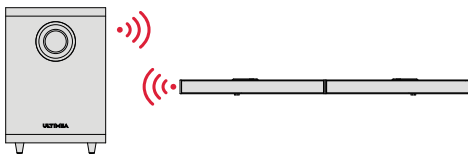
7 CONECTAR CON BLUETOOTH

- 1 Pulse el botón "Bluetooth" de la barra de sonido o del mando a distancia para acceder al modo de emparejamiento Bluetooth.
- 2 Abra la configuración Bluetooth de su teléfono, busque y seleccione "Nova S90" para conectar la barra de sonido.

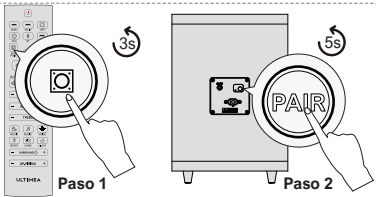
Nota: Si ya está en modo Bluetooth y conectado, mantenga pulsado el botón "Bluetooth" durante 3 segundos para desconectar el dispositivo actual y conectarse a un nuevo dispositivo manualmente en su teléfono móvil / PC / TV.



8 EMPAREJAMIENTO SUBWOOFER



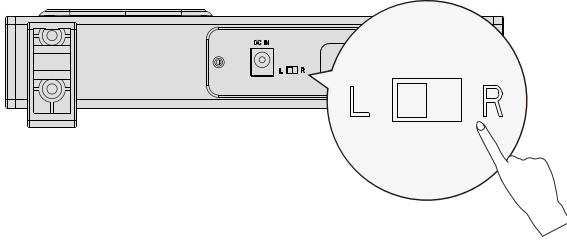
El subwoofer se ha emparejado con la barra de sonido de fábrica. Sin embargo, es posible que tenga que volver a emparejarlo si no sale sonido del subwoofer.



- Paso 1**
Mantenga pulsado el botón "SUB PAIR" del mando a distancia durante 3 segundos, hasta que la barra de sonido muestre "SUB" parpadeando en la parte frontal.
- Paso 2**
Mantenga pulsado el botón "PAIR" del subwoofer durante 5 segundos, hasta que la luz LED blanca parpadee. El subwoofer se ha emparejado correctamente cuando la luz LED blanca se enciende de forma permanente.

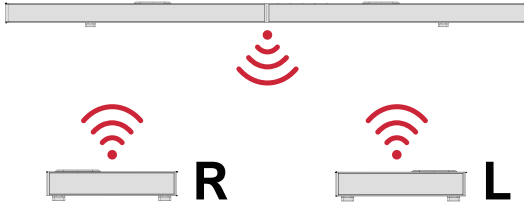
Nota: La interfaz 'SUB OUT' en el subwoofer es un puerto reservado. Si buscas una experiencia de graves mejorada, puedes adquirir un subwoofer activo adicional de forma independiente y conectarlo a esta interfaz para actualizar tu sistema de graves, logrando el efecto de graves óptimo que deseas.

9 APPAIRAGE DES ENCEINTES SURROUND

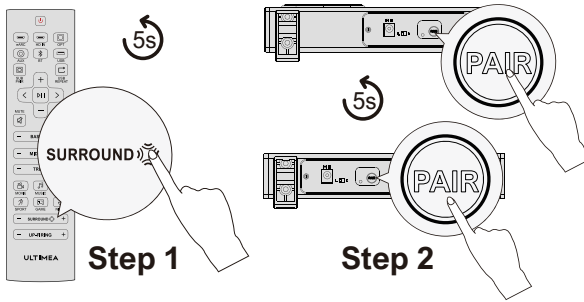


Pour une meilleure écoute, avant de procéder à l'appairage, assurez-vous que les boutons situés à l'arrière des enceintes surround sont placés l'un sur "L" et l'autre sur "R".

ES



Les enceintes surround ont été appariées à la barre de son en usine. Cependant, il se peut que vous deviez les appairer à nouveau si aucun son ne provient des haut-parleurs surround.



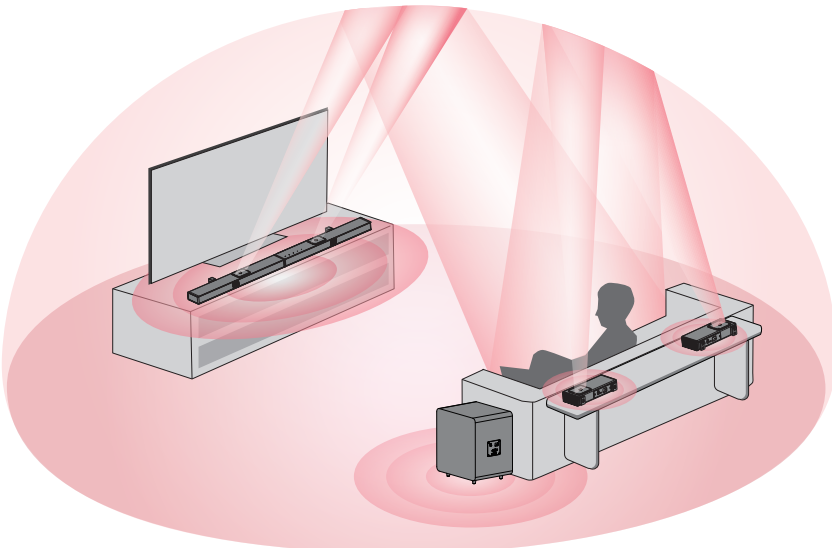
Étape 1

Appuyez sur le bouton "SURROUND" de la télécommande et maintenez-le enfoncé pendant 5 secondes, jusqu'à ce que la barre de son affiche "SUR" en clignotant à l'avant.

Étape 2

Appuyez sur la touche "PAIR" des enceintes surround et maintenez-la enfoncée pendant 5 secondes, jusqu'à ce que le voyant DEL blanc clignote. L'enceinte surround est jumelée avec succès lorsque le voyant DEL blanc s'allume en continu.

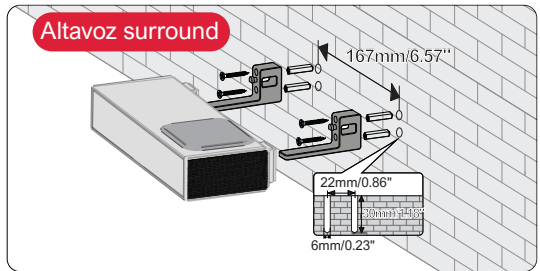
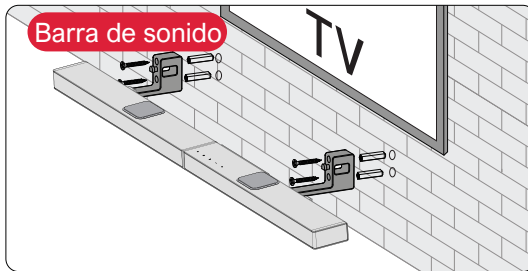
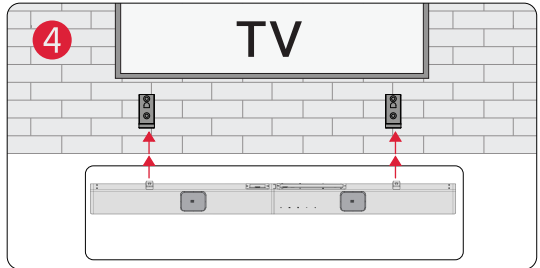
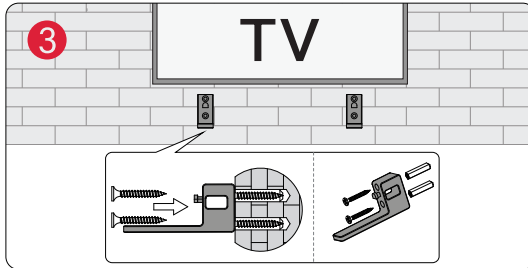
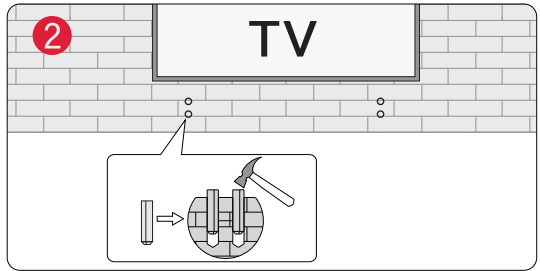
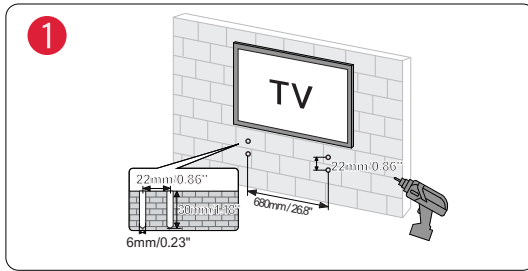
10 OPZIONI DI POSIZIONAMENTO



La barra de sonido y los altavoces surround deben colocarse a la altura de los oídos o cerca de ellos.

11 INSTALACIÓN MURAL

ES



 Nota : Utilice el adaptador HDMI para enchufar y desenchufar fácilmente el cable HDMI.

12 ESPECIFICACIONES

Número de modelo	U4420
Fuente de alimentación	AC 100-240V, ~50/60Hz
Altavoces de la barra de sonido	(3.1" x 1.2")x 5 (barra de sonido)+ 1.8 x 4 (altavoces de tiro ascendente) + (3.1" x 1.2") x 2 (altavoz de la barra surround) +8" (subwoofer)
Respuesta en frecuencia	35Hz - 18kHz
Potencia en espera	<0.5W
Temperatura de funcionamiento	0°C - 45°C / 32°F - 113°F
Visión Bluetooth	5.3

Dimensiones y peso	
Barra de sonido	1008 (W) x 38 (H) x 76 (D)mm 39.7" x 1.5" x 3.0"
Subwoofer	308 (W) x 345 (H) x 237 (D)mm 12.1" x 13.6" x 9.3"
Altavoz surround	205 (W) x 38 (H) x 76 (D)mm 8.1" x 1.5" x 3.0"
Embalaje	550 (W) x 314 (H) x 428 (D)mm 21.7" x 12.4" x 16.9"
Peso neto	10kg / 22.05lbs
Peso bruto	12.6kg / 27.78lbs

SAFETY INSTRUCTIONS

Please read this user manual carefully and save it for future reference.

Do not make unauthorized alterations to the product, doing so may compromise safety, regulatory compliance, system performance, and may void the warranty.

- Avoid dropping.
- Do not disassemble.
- Do not submerge in water
- Avoid extreme temperatures.
- Do not use the device outdoors during thunderstorms.
- Use original or certified cables.
- Do not place dangerous items on top of this device (e.g. liquid filled objects, lit candles).
- Clean with a dry, soft lint-free cloth. Do not use any corrosive cleaner or oil.
- To avoid hearing damage, do not listen for extended periods at high volume.
- Do not expose the batteries to extreme heat sources such as direct sunlight or open flames.
- The ideal operating temperature for this product and its accessories is between 41°F/5°C and 95°F/35°C.
- The adapter should be installed near the device and should be easily accessible.
- Do not use this product in environments of extreme heat or cold. Never expose this device to strong sunshine or wet environments.

PROPER DISPOSAL INSTRUCTIONS



This mark shown on the product or its packaging, indicates that this product should not be disposed of with other household waste at the end of its working life.

To prevent possible harm to the environment or human health from uncontrolled waste disposal, please separate this from other types of wastes and recycle it responsibly to promote the sustainable reuse of material resources.

Waste Electrical & Electronic Equipment

Household user should contact either the retailer where they purchased this product, or their local government office, for details of where and how they can take this item for environmentally safe recycling.

Business users should contact their suppliers and check the terms and conditions of the purchase contract. This product should not be mixed with other commercial wastes for disposal.

FCC REGULATORY COMPLIANCE

Any changes or modifications not expressly approved by the party responsible for compliance could void the user's authority to operate the equipment.

This device complies with Part 15 of the FCC Rules.

Operation is subject to the following two conditions:

- (1) This device may not cause harmful interference.
- (2) This device must accept any interference received, including interference that may cause undesired operation.

NOTE: This equipment has been tested and found to comply with the limits for a Class B digital device, pursuant to part 15 of the FCC Rules. These limits are designed to provide reasonable protection against harmful interference in a residential installation. This equipment generates, uses, and can radiate radio frequency energy, and if not installed and used in accordance with the instructions, may cause harmful interference to radio communications.

However, there is no guarantee that interference will not occur in a particular installation. If this equipment does cause harmful interference to radio or television reception, which can be determined by turning the equipment off and on, the user is encouraged to try to correct the interference by one or more of the following measures:

- Reorient or relocate the receiving antenna.
- Increase the separation between the equipment and the receiver.
- Connect the equipment to an outlet on a circuit different from that to which the receiver is connected.
- Consult the dealer or an experienced radio / TV technician for help.

This equipment complies with FCC radiation exposure limits set forth for an uncontrolled environment. This equipment should be installed and operated with a minimum distance of 20cm between the radiator & your body. This transmitter must not be co-located or operating in conjunction with any other antenna or transmitter.

ISED WARNINGS

This device contains licence-exempt transmitter (s) / receiver (s) that comply with Innovation, Science and Economic Development Canada's licence-exempt RSS (s). Operation is subject to the following two conditions:

- (1) This device may not cause interference.
- (2) This device must accept any interference, including interference that may cause undesired operation of the device.

L'émetteur/récepteur exempt de licence contenu dans le présent appareil est conforme aux CNR d'Innovation, Sciences et Développement économique Canada applicables aux appareils radio exempts de licence. L'exploitation est autorisée aux deux conditions suivantes:

- (1) L'appareil ne doit pas produire de brouillage;
- (2) L'appareil doit accepter tout brouillage radioélectrique subi, même si le brouillage est susceptible d'en compromettre le fonctionnement.

The device meets the exemption from the routine evaluation limits in section 2.5 of RSS 102 and compliance with RSS-102 RF exposure, users can obtain Canadian information on RF exposure and compliance.

Le dispositif rencontre l'exemption des limites courantes d'évaluation dans la section 2.5 de RSS 102 et la conformité à l'exposition de RSS-102 rf, utilisateurs peut obtenir l'information canadienne sur l'exposition et la conformité de rf.

This transmitter must not be co-located or operating in conjunction with any other antenna or transmitter. This equipment should be installed and operated with a minimum distance of 20 centimeters between the radiator and your body.

Cet émetteur ne doit pas être Co-placé ou ne fonctionnant en même temps qu'aucune autre antenne ou émetteur. Cet équipement devrait être installé et actionné avec une distance minimum de 20 centimètres entre le radiateur et votre corps.

Declaration of Conformity

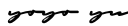
We (Manufacturer is responsible for this declaration)
Ultimea Technology (Shenzhen) Limited
(Company name)

20th Floor, Building 4, Tianan Cloud Park, Bantian St.,
Longgang District Shenzhen, China 518000
(Company address)

Declare under our sole responsibility that the product
Trade Mark: ULTIMEA
Product Name: Nova S90 7.1.4 Channel Dolby Atmos Soundbar
Model No.: U4420

To which this declaration relates is in conformity with
the essential requirement set out in the Council Directive
on the Approximation of the laws of the Member States
relating to RED Directive (2014/53/EU) & RoHS (2011/
65/EU) product is responsible to affix CE marking, the
following standards were applied:

EN 55032:2015/A1:2020
EN 55035:2017/A11:2020
EN IEC 61000-3-2:2019/A1:2021
EN 61000-3-3:2013/A2:2021
ETSI EN 301 489-1 V2.2.3 (2019-11)
ETSI EN 301 489-17 V3.2.4 (2020-09)
ETSI EN 300 328 V2.2.2 (2019-07)
EN 50663: 2017
EN IEC 62368-1:2020+A11:2020
IEC 62321-3-1:2013
IEC 62321-4:2013+A1:2017
IEC 62321-5:2013
IEC 62321-6:2015
IEC 62321-7-1:2015
IEC 62321-7-2:2017
IEC 62321-8:2017

Full Name: Yoyo.Yu
Position: Approbation Manager
Signature: 
Place/Date: Shenzhen, China /Apr 19-2024

Trade Marks:



Dolby, Dolby Atmos, and the double-D symbol are registered trademarks of Dolby Laboratories Licensing Corporation. Manufactured under license from Dolby Laboratories. Confidential unpublished works. Copyright© 2012-2021 Dolby Laboratories. All rights reserved.



The Bluetooth® word mark and logos are registered trademarks owned by Bluetooth SIG, Inc. and any use of such marks by Soundlab Technology Co.,Ltd. is under license. Other trademarks and trade names are those of their respective owners.



The terms HDMI, HDMI High-Definition Multimedia Interface, HDMI trade dress and the HDMI Logos are trademarks or registered trademarks of HDMI Licensing Administrator, Inc.

ULTIMEA

Nova S90 7.1.4 Channel Dolby Atmos Soundbar
Model No.: U4420

 Ultimea GmbH
Buchenring 57, 22359 Hamburg, Germany

 UK CROSSBORDER LIMITED
7 Bell Yard London WC2A 2JR, UK United Kingdom

Made in China

Manufacturer: Ultimea Technology (Shenzhen) Limited
Address: 20th Floor, Building 4, Tianan Cloud Park, Bantian St.,
Longgang District, Shenzhen, China 518000

If you need our support, kindly reach out to our
service team. We are always glad to help.

+1 888-598-8875 (US)
Mon-Fri 9am-5pm (PST)
+49 89-628-25828 (EU)
Mon-Fri 9am-5pm (CET)

 support@ultimea.com

 support.ultimea.com



@ultimea_official